

Standalone DVR

Standalone DVR

Quick Start Guide

Quick Start Guide

Welcome

Thank you for purchasing our DVR!

This quick start guide will help you become familiar with our DVR in a very short time.

Here you can find hardware installation, cable connection information and general operations such as system setup, record, search, backup, alarm setup, PTZ operation, as well as web operation instruction.

Before installation and operation please read the following safeguards and warnings carefully!

Important Safeguards and Warnings

1 Electrical safety

All installation and operation here should conform to local electrical safety codes. We assume no liability or responsibility for all the fires or electrical shock caused by improper handling or installation.

2 Transportation security

Heavy stress, violent vibration or water splash are not allowed during transportation, storage and installation.

3 Installation

Keep upwards. Handle with care.
Do not apply power to the DVR before completing installation.
Do not place objects upon the DVR

4 Qualified engineers needed

All the examination and repair work should be done by the qualified service engineers.
We are not liable for any problems caused by unauthorized modifications or attempted repair.

5 Environment

The DVR should be installed in a cool, dry place away from direct sunlight, inflammable, explosive substances and etc.

6 Accessories

Be sure to use all the accessories recommended by manufacturer.
Before installation, please open the package and check all the components listed below are included:
 § One power cable
 § One Ethernet cable
 § Four HDD cables
 § Alarm & relay terminal blocks
 § Extensional cable(for audio, loop & matrix)
 § One remote control(including the battery)
 § One USB mouse
 § One CD(including DVR manual, client & small tools)
 § Warranty card
 § A package of installation fittings
 Contact your local retailer ASAP if something is missing in your package.

Note

Any changes of this manual made to the actual product are subject to no further notification.

Table of Contents

1 Hardware Installation and Connections.....	04
1.1 Check Unpacked DVR.....	04
1.2 HDD Installation.....	04
1.2.1 Choose HDDs.....	04
1.2.2 Calculate HDD Size.....	04
1.2.3 HDD Installation.....	04
1.3 Front Panel.....	05
1.4 Rear Panel.....	07
1.5 Connection Sample.....	08
1.6 Alarm Input and Relay Output.....	08
1.6.1 Alarm Input.....	08
1.6.2 Alarm Output.....	09
1.6.3 Alarm Input and Output Details.....	09
1.6.4 Relay Output Description.....	10
2 Overview of Navigation and Controls.....	10
2.1 Login, Logout & Main Menu.....	10
2.1.1 Login.....	10
2.1.2 Main Menu.....	11
2.1.3 Logout.....	11
2.1.4 Auto Resume after Power Failure.....	12
2.1.5 Replace Button Battery.....	12
2.2 Recording Operation.....	12
2.2.1 Live Viewing.....	12
2.3 Record Setup (Schedule).....	12
2.3.1 Schedule Menu.....	12
2.3.2 Manual record.....	13
2.3.3 Encode.....	14
2.3.4 Search and Playback.....	15
2.3.5 Basic Operation.....	16
2.4 Network Setup.....	18
2.5 Pan/Tilt/Zoom.....	19
2.5.1 PTZ setup.....	19
2.5.2 PTZ operation.....	19
2.5.3 3D Intelligent Positioning Key.....	20
3 Web Client Operation.....	21
3.1 Network Connection.....	21
3.2 Login.....	21
3.3 Main Window.....	23

1 Hardware Installation and Connections

Note All the installation and operations here should conform to your local electric safety rules.

1.1 Check Unpacked DVR

When you receive the DVR from the shipping agency, please check whether there is any visible damage to the DVR appearance. The protective materials used for the package of the DVR can protect most accidental clashes during transportation. Then you can open the box to check the accessories.

Please check the items in accordance with the list on the warranty card. Finally you can remove the protective film of the DVR.

1.2 HDD Installation

1.2.1 Choose HDDs

We recommend Seagate HDD of 7200rpm or higher.

1.2.2 Calculate HDD Size

This series have no limit to HDD capacity. You can use 120G–750G HDD to guarantee higher stability.

The formula of total HDD size is:

Total Capacity (MB) = Camera Amount * Recording Hours * HDD Usage Per Hour (M/h)

H.264 compression is ideal for standalone DVRs. It can save more than 30% HDD capacity than MPEG4. When you calculate the total HD capacity, you should estimate the average HDD capacity per hour for each channel.

For example, for a 4–ch DVR, the average capacity of HDD usage per hour per channel is 200M Now if you hope the DVR can record the video 12 hours each day for 30 days, the total capacity of HDDs needed is: 4 channels * 30 days * 12 hours * 200 M/h = 288G. So you need to install one 300G HDD.

1.2.3 HDD Installation

Data ribbons, fastening screws and smart HDD shelf design are already provided in the accessories bag.

Please follow the instructions below to install hard disk.



1. Loosen the screw s
2. Remove the upper cover of the DVR
3. Dismantle the HDD bracket



4. Install the HDD. Please note the HDD is placed upside down. Please make sure bracket is in correct position.
5. Fix the HDD bracket.
6. Connect to SATA port



7. Connect to HDD power cable.
8. Place upper cover back.
9. Screw the upper cover firmly.

After HDD installation, please check connection of data ribbon and power cord.

1.3 Front Panel

This series DVR front panel is shown as in Figure 1–1

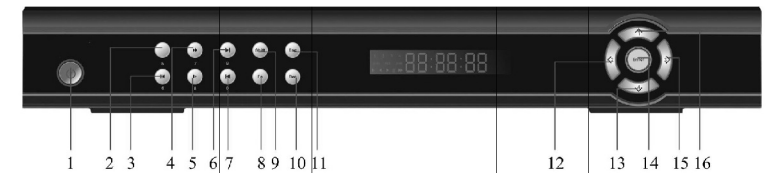


Figure 1-1

- 1. Power
- 2. Play/Pause
- 3. Reverse/Pause
- 4. Fast play
- 5. Slow play
- 6. Next
- 7. Previous
- 8. Assistant
- 9. Shift
- 10. Record
- 11. Cancel
- 12. Left
- 13. Down
- 14. O.K
- 15. Right
- 16. Up

Please refer to the following sheet for front panel button information.

SN	Button Name	Icon	Function
1	Power		Boot up or shut down the DVR
2	Play/pause	⏪	In playback mode: play or pause video. In text box: input number 5.
3	Reverse/pause	⏮	In playback mode: reverse play video. In text box: input number 6.
4	Fast play	⏭	In playback mode: click this button to switch between various fast play speeds and normal playback. In text box: input number 7.

SN	Button Name	Icon	Function
5	Slow play	▶	In playback mode: click this button to switch between various slow play speeds and normal playback. In text box: input number 8.
6	Next	▶	In playback mode: play the next video. In text box: input number 9.
7	Previous	◀	In playback mode: play the previous video. In text box: input number 0
8	Assistant	Fn	In 1-ch monitor mode: pop up assistant function: PTZ control and Video color
			In motion detection interface, working with direction keys to finish setup.
			Clear: Press Fn for 1.5 seconds to clear all contents in current text box.
			In preview interface (There is no other menu), click this button for 3 seconds to switch between TV/VGA.
			In text box input mode, press this button to switch between numeral/English character (small/capitalized). Special combined operation in some menus.
9	Shift	SHIFT	In input mode, switch between numeral/character and other function keys. In four-window preview mode, it can work as Fn button.
10	Record	REC	Enable or disable record function manually. In record control menu, working with direction keys to select recording channel.
11	Cancel	ESC	Go back to previous menu or cancel current operation in function menu interface.
			In video playback mode, click this button to go back to real-time monitor mode.
14	O.K	ENTER	Confirm Go to the main menu
12 13 14 15	Direction keys	∨ ∨	Move cursor
			In text box: increase or decrease numerals.
			In dropdown list, modify current setup.
		◀ ▶	In monitor mode, click this button to go to the 1st channel-1 or 4 th channel. (Single-channel monitor mode). In text box input mode, press SHIFT and then use up/down key to input number 1 or 4.
			◀ ▶
◀ ▶	In playback mode: Click left/right key to select corresponding option in the function menu.		
	◀ ▶	In monitor mode, click left/right key to go to 2nd channel or 3rd channel (single-window monitor mode)	
◀ ▶		In text box input mode, press SHIFT and then use left/right key to input number 2 or 3.	

1.4 Rear Panel

Please refer to Figure 1-2 for rear panel information.

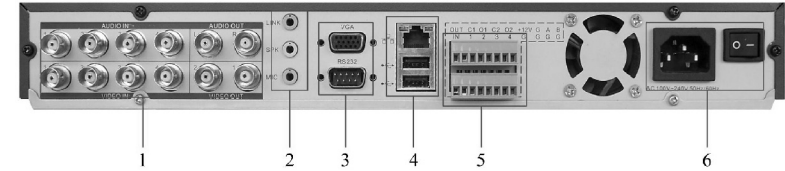


Figure 1-2

- 1 Audio and video input/output section: Video input/output interface、audio input/output interface;
- 2 LINE SPK MIC:
 - Blue (LINE) is input cable: Level: 2Vrms, Input resistance: 10k ohms
 - Green (SPK) is output cable: Level: 2Vrms, Input resistance: 10k ohms
 - Pink (MIC) is micro phone input cable: Level: 10mV-200mVp-p, Input resistance: 600k ohms-20k ohms;
- 3 RS232 port、VGA port;
- 4 Mouse/network interface: Two USB 2.0 high-speed ports、10M/100M self-adaptable Ethernet port
- 5 Main function section:
 - C1/O1: Alarm output 1 public port
 - C2/O2: Alarm output 2 public port
 - +12V: +12V/100mA output
 - A~B: RS485 port
 - 1~4: Alarm input port
 - G: Ground
- 6 Power control section: Power socket (DC 12V);
Please pay attention to the ethernet connection, you need to use crossover cable to connect DVR to PC. You need to use straight-through to connect DVR via hub or switch.

Note In light of customer's requirement, a number of models uses external power supply, so the rear panel might have slight differences.

1.5 Connection Sample

Here is a connection sample for your reference. See Figure 1-3.

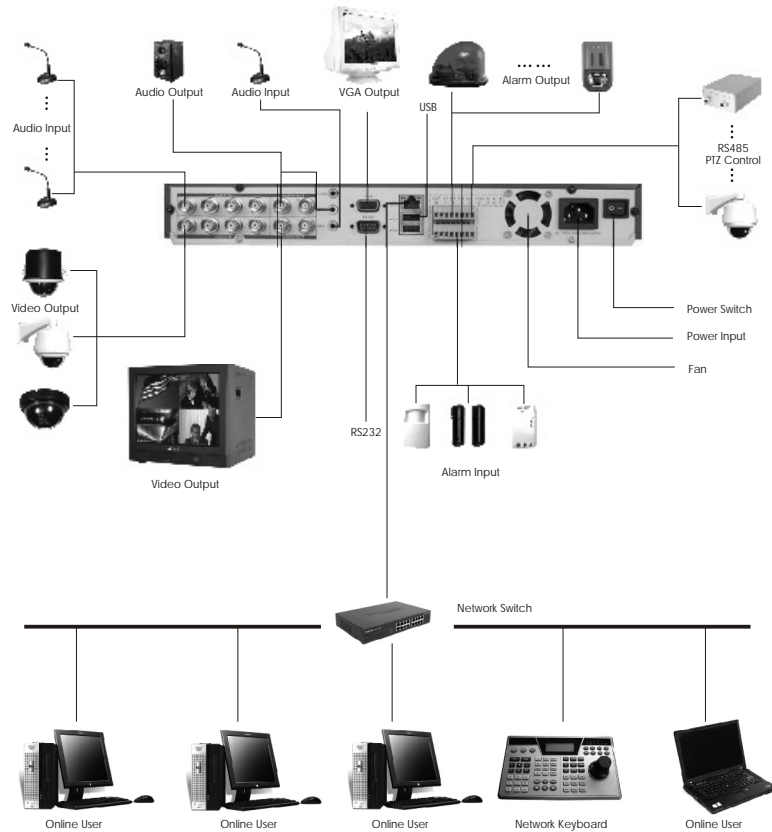


Figure 1-3

1.6 Alarm Input and Relay Output

This series DVR offers 4-ch alarm input for external signaling devices, such as door contacts or motion detectors. Each alarm input can be either normally open or normally closed. Once configured, an alarm input can invoke many different activities, including triggering a relay device, sending an alert to a security office or storing pre-alarm video to the DVR.

1.6.1 Alarm Input

You should check your alarm input mode is grounding alarm input or not. For this series DVR, grounding signal is needed for alarm input.

If you need to connect two units or one DVR and other device, please use relay to separate them.

Please refer to Figure 1-4 for more information.

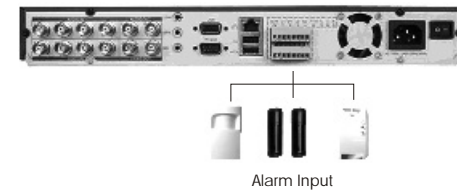


Figure 1-4

1.6.2 Alarm Output

Do not connect alarm output port directly with high power load (no more than 1 A) in case of heavy current.

You can use the co-contactor to realize the connection between the alarm output port and the load.

Please refer to Figure 1-5 for more information.



Figure 1-5

1.6.3 Alarm Input and Output Details

You can refer to the following sheet and Figure 1-6 for more information.

Parameter	0404 L(N)(Grounding Alarm)
G	Ground line
C1/O1:C2/O2	These are two alarm output ports(Normal Open)
485 A、B	485 communication port. They are used to control devices such as PTZ.
+12 (C)	Provide 100mA power to the main board. You need to provide external power if the power is more than 100mA, otherwise it will damage PC power.

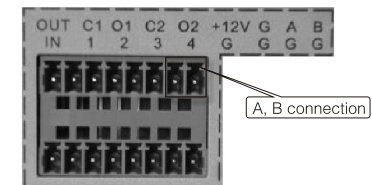


Figure 1-6

Please see Figure 1–7 for more information.

- 4–ch grounding alarm inputs. (Normal open or Normal close type)
- Please parallel connect COM end and GND end of the alarm detector (Provide external power to the alarm detector).
- Please parallel connect the Ground of the DVR and the ground of the alarm detector.
- Please connect the NC port of the alarm sensor to the DVR alarm input(ALARM)
- If you need to reset the touched–off alarm remotely, you can use DVR to supply controllable 12 V power to the alarm detector such as the smoke detector.
- Use the same ground with that of DVR if you use external power to the alarm device.

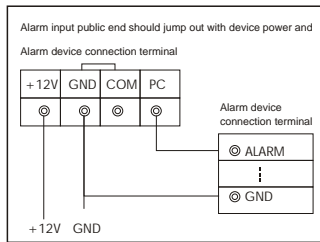


Figure 1-7

1.6.4 Relay Output Description

- 2–ways relay alarm output. Provide external power to external alarm device.
- To avoid over loading, please read the following relay parameters sheet carefully. (See below table)
- The controllable +12v can be used to restore the smoke detector.
- RS485 cable is for PTZ decoder A/B cable connection.

2 Overview of Navigation and Controls

Before operation, please make sure you have properly installed HDDs and all the cable connections.

2.1 Login, Logout & Main Menu

2.1.1 Login

When the system boots up, default video display is in multiple–window mode. Click Enter or left click mouse, you can see the login interface. See Figure 2–1. System consists of four accounts:

- Username: admin. Password: admin. (administrator, local and network)
- Username: 888888. Password: 888888. (administrator, local only)
- Username: 666666. Passwords: 666666(Lower authority user who can only monitor, playback, backup and etc.)
- Username: default. Password: default(hidden user)

For your system security, please modify you password after first login. You can use USB mouse, front panel, remote controller or keyboard to input.

About input method: Click **i23** to switch among numeral, English character (small/capitalized) and denotation.

Note

Three times login failure in 30 minutes will result in system alarm and five times login failure will result in account lock!



Figure 2-1

2.1.2 Main Menu

After you logged in, the system main menu is shown as below. See Figure 2–2.

There are total six icons: search, info, setting, advanced, backup, and shutdown.

You can move the cursor to highlight the icon, and then double click mouse to enter the sub–menu.



Figure 2-2

2.1.3 Logout

There are two ways for you to log out.

One is from menu option:

In the main menu, click shutdown button, you can see an interface is shown as below. See Figure 2–3.



Figure 2-3

There are several options for you. See Figure 2-4

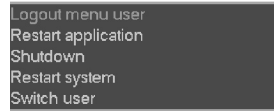


Figure 2-4

The other ways is to press power button on the front panel for at least 3 seconds, system will stop all operations. Then you can click the power button in the rear panel to turn off the DVR.

2.1.4 Auto Resume after Power Failure

The system can automatically backup video and resume previous working status after power failure.

2.1.5 Replace Button Battery

Please make sure to use the same battery model if possible.

We recommend replace battery regularly (such as one-year) to guarantee system time accuracy.

2.2 Recording Operation

2.2.1 Live Viewing

When you login, the system is in live viewing mode. You can see system date, time and channel name. If you want to change system date and time, you can refer to general settings (Main Menu->Setting->General). If you want to modify the channel name, please refer to the display settings (Main Menu->Setting->Display)

1		Recording status	3		Video loss
2		Motion detection	4		Camera lock

Note

Please refer to the following sheet for channel status. stands for opening switch function, stands for closing switch function.

2.3 Record Setup (Schedule)

When the system boots up, it is in default 24-hour regular mode. You can set record type and time in schedule interface.

2.3.1 Schedule Menu

In the main menu, from setting to schedule, you can go to schedule menu. See Figure 2-5.

There are three record types: R-Regular, MD-Motion detection, A- Alarm. There are total six periods.

- Channel: Please select the channel number first. You can select “all” if you want to set for the whole channels.
- Week day: There are eight options: ranges from Saturday to Sunday and all.
- Snapshot: You can enable this function to snapshot image when alarm occurs.
- Record types: There are three types: regular, motion detection (MD) and Alarm.

Please highlight icon to select the corresponding function. After all the setups please click save button, system goes back to the previous menu.

At the bottom of the menu, there are color bars for your reference. Green stands for regular recording, yellow stands for motion detection and red stands for alarm recording.

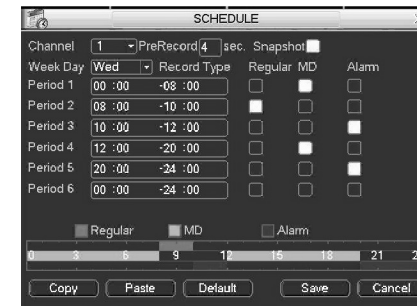


Figure 2-5

2.3.2 Manual record

Note

You need to have proper rights to implement the following operations. Please make sure the HDDs have been properly installed.

2.3.2.1 Manual record menu

There are two ways for you to go to manual record menu.

- Right click mouse or in the main menu, Advanced->Manual Record.
 - In live viewing mode, click record button in the front panel or record button in the remote control.
- There are three statuses: schedule/manual/stop. Highlight icon “○” to select corresponding channel. See Figure 2-6.
- Manual: the highest priority. After manual setup, all selected channels will begin ordinary recording.
 - Schedule: channel records as you have set in recording setup (Main Menu->Setting->Schedule)
 - Stop: all channels stop recording.



Figure 2-6

2.3.3 Encode

Encode setting includes the following items. See Figure 2–7.

- Channel: Select the channel you want.
- Compression: system supports H.264. Or you can select from the dropdown list.
- Resolution: System supports various resolutions, you can select from the dropdown list. For this model, we can support D1/CIF.
- Bit rate: system supports two types: CBR and VBR. In VBR mode, you can set video quality.
- Quality: There are six levels ranging from 1 to 6. The sixth level has the highest image quality.
- Frame rate: there are six levels: 1 f/s,2f/s,3f/s, 6f/s,12f/s,25f/s. (Some series DVRs only support PAL 25f/s)
- Video/audio: you can enable or disable the video/audio respectively for the main stream and extra stream.
- Overlay: click overlay button, you can see an interface is shown in Figure 2–8.
 - ※ Cover area (Privacy mask): Here is for you to set window blanking section. You can drag you mouse to set proper section size.
 - ※ Preview/monitor: privacy mask has two types. Preview means the privacy mask zone can not be viewed by user when system is in preview status. Monitor means the privacy mask zone can not be view by the user when system is in monitor status.
 - ※ Time display: You can select system displays time or not when you playback.
 - ※ Channel display: You can select system displays channel number or not when you playback.
- Snapshot: Click snapshot button, you can see an interface is shown as in Figure 2–9.
 - ※ Mode: There are two types: one is timing and the other is activation (trigger).
 - ※ Image size: D1/HD1/BCIF/CIF.
 - ※ Image quality: level1 to level 6.
 - ※ Snapshot frequency: Here you can set the snapshot frequency. The value ranges from 1s/p to 7s/p.

System default setup is:

- Channel:1

- Compression:H.264
- Resolution: CIF
- Bit rate: CBR
- Quality: 4
- Frame rate: 25f/s

Please highlight icon  to select the corresponding function.

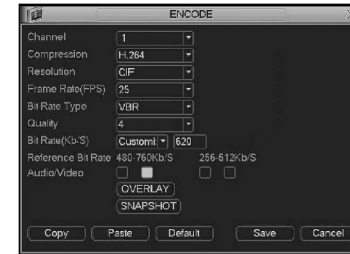


Figure 2-7

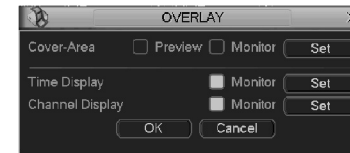


Figure 2-8

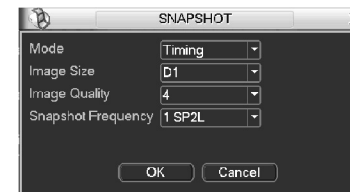


Figure 2-9

2.3.4 Search and Playback

There are two ways for you to go to search menu.

- Click Pause/Play button in the remote control.
- Click search in the main menu.

Search interface is shown as below. See Figure 2–10.

Usually there are three file types:

- R: regular recording file.
- A: external alarm recording file.
- M: motion detection recording file
- C: card and pos test overlay recording file(For some special series only)

There are several playback windows. System supports 1–ch playback.



Figure 2-9

Please refer to the following sheet for more information.

Serial Number	Function
1	Play
2	Backward
3	Stop
4	Slow play
5	Fast play
6	Previous frame
7	Next frame
8	Volume
9	Previous file
10	Next channel
11	Next file
12	Previous channel
13	Search
14	Backup

2.3.5 Basic Operation

2.3.5.1 Playback

There are various search modes: video type, channel number or time. The system can max display 128 files in one screen. You can use page up/down button to view if there are more than one page.

Select the file name and double click mouse (or click enter button), you can view file content.

2.3.5.2 Accurate playback

Input time (h/m/s) in the time column and then click playback button, system can operate accurate playback.

2.3.5.3 Synchronized playback function when playback

During playback process, click numeral key, system can switch to the corresponding channel video of the same time.

2.3.5.4 Digital zoom

When the system is in full-screen playback mode, drag your mouse in the screen to select a section and then left click mouse to realize digital zoom. You can right click mouse to exit.

2.3.5.5 File backup

System supports backup operation during search. You can draw a √ before file name (multiple choices). Then click backup button (Button 14 in Figure 2-10).

2.3.5.6 Slow playback and fast playback

Please refer to the following sheet for slow play and fast playback function.

Button	Illustration	Remarks
Fast play button ▶	In playback mode, click this button to switch between various fast play modes such as fast play 1, fast play 2 and more. (Fast play 1 means fast play level 1 or not about speed)	Frame rate may vary due to different versions.
Slow play button ▶ (Or you can turn the outer ring counter clockwise.)	In playback mode, click this button to switch between various slow play modes such as slow play 1 or slow play 2.	
Play/Pause ▶	In slow playback mode, click this button to switch between play/pause modes.	
Previous/next	In playback mode, you can click ◀ and ▶ to view previous or next video in current channel.	

2.3.5.7 Fast forward/fast backward and frame by frame playback

Special Functions of Shuttle and Jog	Illustration	Remarks
Fast forward(outer ring clockwise)	When playback, turn the shuttle (outer ring) clockwise one round: you can view in fast level 1. Turn it two rounds you get fast level 2. You can continue turning to get different speed.	In forward or backward mode, double click Pause/Play button to get normal playback. Frame rate may vary due to different version.
Fast backward(outer ring counter clockwise)	When playback, turn the shuttle (outer ring) counter clock-wise one round, you can view in backward level 1. Turn it two rounds, you get backward level 2. You can continue turning to get different speed.	
Manual playback frame by frame	In playback mode, click play/pause button, slowly turn the jog (inner dial) clock-wise to view frame by frame, counter clock wise to view 1 frame playback.	

2.3.5.8 Backward playback and frame by frame playback

Button	Illustration	Remarks
Backward play ◀ in playback interface.	In normal playback mode, left click backward play button, system begins backward playback. Double click backward play button again, system goes to pause mode.	When system is in backward play or frame by frame playback mode, you can click play button to go to normal playback.
Manual playback frame by frame.	Click pause button in normal playback mode, slowly turn the jog (inner dial) clock-wise to view frame by frame, counter clock wise to view I frame playback.	

Note

All the operations here (such as playback speed, channel, time and progress) have relationship with hardware version. Some series DVRs do not support some functions or playback speeds.

2.4 Network Setup

Here is for you to input network information. See Figure 2–11.

- IP address: Here you can input IP address.
- DHCP: It is auto search IP function. When enable DHCP function, you can not modify IP/Subnet mask /Gateway. These values are from DHCP function. If you have not enabled DHCP function, IP/Subnet mask/Gateway display as 0. You need to disable DHCP function to view current IP information. Besides, when PPPoE is operating, you can not modify IP/Subnet mask /Gateway.
- TCP port: Default value is 37777. (System server port 37778 is reserved for network UDP use.)
- UDP port: Default value is 37778.
- HTTP port: Default value is 80.
- Max connection: system support maximal 10 users. 0 means there is no connection limit.
- Transfer mode: Here you can select the priority between fluency/video qualities.
- Network download: System can process the downloaded data first if you enable this function.

After completing all the setups please click save button, system goes back to the previous menu.

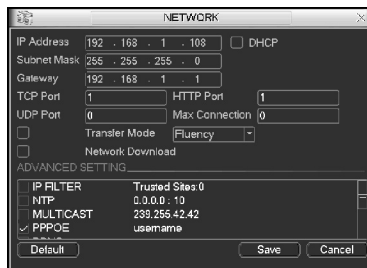


Figure 2-11

2.4.1.1 Advanced Setup

Advanced setup interface is shown as in Figure 2–12. Please draw a circle to enable corresponding function and then double click current item to go to setup interface.

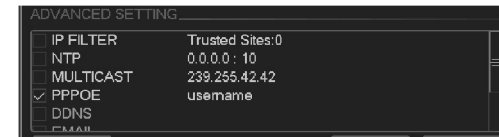


Figure 2-12

2.5 Pan/Tilt/Zoom

2.5.1 PTZ setup

The pan/tilt/zoom setup includes the following items. Please select channel first. See Figure 2–13.

- Protocol: select corresponding PTZ protocol such as PELCOD.
- Address: input corresponding PTZ address.
- Baud rate: select baud rate.
- Data bit: select data bit.
- Stop bit: select stop bit.
- Parity: there are three choices: none/odd/even.

After completing all the setups please click save button, system goes back to the previous menu.



Figure 2-13

After completing all the setups please click save button.

2.5.2 PTZ operation

In one window display mode, right click mouse (click “Fn” Button in the front panel or click “Fn” key in the remote control). The interface is shown as in Figure 2–14.



Figure 2-14

Click Pan/Tilt/Zoom, the interface is shown as below. See Figure 2–15.

Here you can set the following items:

- Step: value ranges from 1 to 8.
- Zoom
- Focus
- Iris

Click icon and to adjust zoom, focus and iris



Figure 2-15

In Figure 2–16, please click direction arrows (See Figure 2–15) to adjust PTZ position. There are total 8 direction arrows.



Figure 2-16

2.5.3 3D Intelligent Positioning Key

In the middle of the eight direction arrows, there is a 3D intelligent positioning key. See Figure 2–17.

Click this key, system goes back to the single screen mode. Drag the mouse in the screen to adjust section size. It can realize PTZ automatically.



Figure 2-17

Here is a sheet for you reference.

Name	Function key	function	Shortcut key	Function key	function	Shortcut Key
Zoom		Near	▶		Far	▶▶
Focus		Near	◀		Far	▶
Iris		close	◀◀		Open	▶▶

You can click set button in Figure 2–15 to set preset, tour, and pattern.

3 Web Client Operation

There might be slightly difference in the interface due to different series.

3.1 Network Connection

Before web client operation, please check the following items:

- Network connection is right
- DVR and PC network setup is right. Please refer to network setup(main menu-> setting->network)
- Use command ping ***.***.***.***(* DVR IP address) to check connection is OK or not. Usually the return TTL value should be less than 255.
- System is compatible with WIN VISTA web control right now. But you need to disable user account control function. Double click user account and then disable user account control. After completing setup, please reboot the PC.
- System can automatically download latest web control and the new version can overwrite the previous one.
- If you want to un-install the web control, please go to start and then click run button, input regsvr32 -u Web Rec. ocx in the pop up dialogue box or run uninstall web.bat to un-install. Please note, before you un-install, please close all web page, otherwise the un-installation might result in error.

3.2 Login

Open IE and input DVR address in the address column. For example, if your DVR IP is 10.10.3.16, then please input http:// 10.10.3.16 in IE address column. See Figure 3–1



Figure 3-1

System pops up warning information to ask you whether install webrec.cab control or not. Please click yes button.

If you can't download the ActiveX file, please modify your settings as follows. See Figure 3-2.

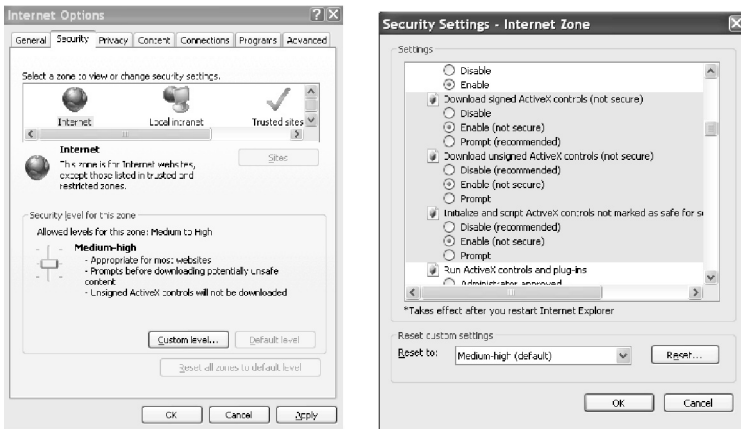


Figure 3-2

After installation, the interface is shown as below. See Figure 3-3. Please input your user name and password. Default factory name is admin and password is admin.

Note For security reasons, please modify your password after you first login.

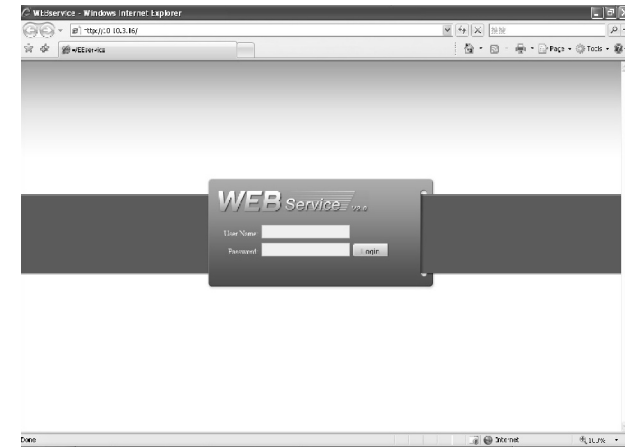


Figure 3-3

3.3 Main Window

After you logged in, you can see the main window. See Figure 3-6.

This main window can be divided into the following sections.

- Section 1: there are five function buttons: configuration, search, alarm, about, log out.
- Section 2: there are channel number and two function buttons: start dialog and local play.
- Section3: there are PTZ, color button and you can also select picture path and record path.
- Section 4:real-time monitor window. Please note current preview window is circled by a green rectangle zone.
- Section 5: Here you can view window switch button. You can also select video priority between fluency or real-time.

※ System monitor window switch supports full screen/1-window/4-window/6-window/8-window/9-window/13-window/16-window/20-window/25-window/36-window. See Figure 3-4.



Figure 3-4

Preview window switch. System support 1/4/8/9/16-window real-time preview. Please you need to have the proper rights to implement preview operation. You can not preview if you have no right to preview the either channel. See Figure 3-5.



Figure 3-5



Figure 3-6

Note

For security reason, only the user of high-level can shut down the DVR. Do remember logging out the system in case there is vicious operation under your name!

For detailed operation introduction, please refer to our resource CD included in your package for electronic version of the user's manual.
 Slight difference may be found in user interface.
 All the designs and software here are subject to change without prior written notice.
 Please visit our website for more information.