

QVVS®

ORPHEUS

4/8/16 Channel Full Realtime 960H DVR

ORPHEUS-4

ORPHEUS-8

ORPHEUS-16

User's Manual

V1.0 10 / 2014

ENHANCE YOUR DVR WITH OUR WIDE RANGE OF QVIS CAMERAS

OUR PRODUCTS ARE FULLY TESTED TO WORK TOGETHER



*DONT SETTLE FOR LESS,
ALL OUR PRODUCTS CARRY QVIS LOGOS*

TABLE OF CONTENTS

1	FEATURES AND SPECIFICATIONS	1
1.1	Product Overview	1
1.2	Features	1
1.3	Installation	3
1.3.1	Unpacking Inspection	3
1.3.2	Wiring Installation	3
1.4	The Mouse	3
1.5	The Input Method	4
1.6	Power On/Off	4
1.6.1	Power On	4
1.6.2	Power Off	6
1.6.3	Power recovery	6
1.7	Icon	6
1.7.1	The Screen Icons	6
1.7.2	Operation Icons	7
1.8	The Real-time Browser	7
2	OPERATIONS GUIDE	8
2.1	The Right-click Menu	8
2.1.1	The Screen Switching	8
2.1.2	Color setting	8
2.1.3	The Video Inquiry	9
2.1.4	Alarm output	9
2.1.5	The Main Menu	10
2.2	The Introduction of the Main Menu	10
2.3	The Video Inquiry	11
2.4	Configuration	14
2.4.1	System	14
2.4.2	Record	15
2.4.3	Network	17
2.4.4	Alarm	20
2.4.5	Account	20
2.4.6	Abnormality	22

2.5 Storage	22
2.5.1 HDD Management	22
2.5.2 Backup	24
2.6 Output	25
2.6.1 Display	25
2.7 Maintain	27
2.7.1 Log	27
2.7.2 Version.....	28
2.7.3 Default.....	28
2.7.4 BPS.....	28
2.7.5 Auto Maintain.....	28
2.7.6 Online User	29
2.8 Shutdown	29
3 WEB AND CLIENT	30
3.1 Web Operation	30
3.1.1 Network Connection	30
3.1.2 The control installation and the user login logout	30
3.1.3 The Interface Of Web Operations.....	31
3.1.4 The Real-time Monitoring	32
3.1.5 Configuration	33
3.1.6 Search Record.....	34
3.1.7 Alarm Configuration	34
4 FUNCTIONS	36
4.1 DDNS Function	36
4.1.1 Summary.....	36
4.1.2 NO-IP (www.no-ip.com)	36
4.1.3 Dyn dns DDNS (www.dyndns.com)	37
4.1.4 Test and verify DDNS	37
4.2 Port Mapping	39
4.2.1 UPNP Function	39
4.2.2 Manual port mapping	40
4.3 NTP function	40
4.3.1 Internet configuration	40
4.3.2 Intranet Configuration	41
4.4 Voice Intercom	41
4.4.1 Summarise.....	41
4.4.2 Configuration	42

4.5 HDD Redundancy	42
4.6 HDD S.M.A.R.T.	43
5 COMMON FAULTS	45

Welcome

Thank you for purchasing the **Orpheus 4, 8 or 16 Channel Full Realtime 960H recording DVR.**

This user's manual is designed to be a reference tool for the installation and operation of your system.

Here you can find information about the corresponding DVR's features and functions, as well as a detailed menu tree.

Before installation and operation please read the following safeguards and warnings carefully!

Important Safeguards and Warnings

1 . Electrical safety

- All installation and operation here should conform to your local electrical safety codes.
- We assume no liability or responsibility for all the fires or electrical shock caused by improper handling or installation.

2 . Transportation security

- Heavy stress, violent vibration or water splash are not allowed during transportation, storage and installation.

3 . Installation

- Keep upwards. Handle with care.
- Do not apply power to the DVR before completing installation.
- Do not place objects on the DVR

4 . Qualified engineers needed

- All the examination and repair work should be done by the qualified service engineers.
- We are not liable for any problems caused by unauthorized modifications or attempted repair.

5 . Environment

- The DVR should be installed in a cool, dry place away from direct sunlight, inflammable, explosive substances and etc.
- This series product shall be transported, storage and used in the environment ranging from 0°C to 55 °C

6. Accessories

- Be sure to use all the accessories recommended by manufacturer.
- Before installation, please open the package and check all the components are included.
- Contact your local retailer ASAP if something is broken in your package.

7. Lithium battery

- Improper battery use may result in fire, explosion, or personal injury!
- When replace the battery, please make sure you are using the same model!

1 FEATURES AND SPECIFICATIONS

1.1 Product Overview

This product is designed specifically for the use in the field of video surveillance and adopts H.264 video compression, hard disk recording, TCP/IP transmission and a Linux based OS in addition to some of the most advanced technology in the information technology industry. These elements help to produce a more stable, reliable and higher quality video image. The products support synchronised video, audio recording, playback, monitoring and the synchronisation of audio and video. The products support advanced control technology and strong network data transmission capacity.

1.2 Features

Real-time monitoring

Composite video signal interface and support TV, VGA or HDMI output simultaneously.

Compression function

Uses H.264 video compression standard and G.711 audio compression standard and has high definition, low code rate of the video coding to decrease the amount of data to save to HDD storage.

Recording function

Supports timing, alarm alerts, motion detection, SATA hard and local hard disks, DVR data backup and network backup.

Video playback function

You can search videos, within the local network, by using the playback interface. As well as this it supports multiple videos playback, fast playing, slow playing and frame-by-frame playback. Video playback can be displayed the exact time of the incident using a graphical timeline to allow you to search for event footage much more efficiently.

Camera control and alarm

Remotely installed cameras can be controlled and various alarm devices can be connected to ensure that you know when an event has been detected. The DVR integrates Dynamic detection, video loss, video block, multiple alarm output and scene lighting control into its controller options.

Communication Interface

Equipped with USB 2.0 high-speed interface and an ESATA interface to allow for external video backup devices. There is also an option to store data on a remote server (cloud storage location) by connected the DVR to a local or wide area network by using the standard Ethernet interface port (plug and play).

Network functions

Supports:

- **TCP / IP**
- **UDP**
- **RTP / RTSP**
- **DHCP**
- **PPPOE**
- **DDNS**
- **NTP**

Also supports real-time network monitoring, video playback, control and management functions. The built-in WEB Server will allow you to directly access the DVR through a web browser.

Mode of operation

You can operate by the DVR's front panel or using a mouse. A simple, intuitive graphical interface is provided for intuitive operation.

1.3 Installation

1.3.1 Unpacking Inspection

When you receive the product, check according to the packing list in the box.

1.3.2 Wiring Installation

Preparing for installation

Prepare a camera, a display, video lines, network cables, a mouse, and kinds of power cord.

Installation Steps:

1. Place the DVR on a flat horizontal position and connect the camera to the video input interface in the rear panel.
2. Connect the displayer to the video output.
3. Connect the network to the RJ45 interface.
4. Connect the Mouse to the USB interface found in either the front or rear panels.
5. Connect the power.

Caution

For an external alarm device or a PTZ, please refer to the relevant instructions. Connect the power line after all lines connected correctly.

1.4 The Mouse

In addition to front the panel keys and remote control menu, the user can use a mouse to operate DVR. Insert the mouse interface into the USB interface.

Left Click

- Left click to enter the right menu or the main interface.
- Left click to access the menu option.
- Perform the operational instructions of the control interface.
- Change the state of the checkbox or dynamic detection blocks.
- Pop up a drop-down list when left click.
- When using the PTZ 3D control, left drag the area to achieve regional enlarging or reducing.

Double Click

- Double click to play video.
- Double click to make the screen full or exit.

Right Click

- Right click to pop up the right menu in the real-time monitoring screen.
- Exit the current interface without saving.

Turning Wheel

- Turn the mouse wheel to change the value in the digital box.
- Switch the option of the combination box.
- Scroll back and forth to achieve the zoom function of channels and PTZ 3D.

Mouse Move

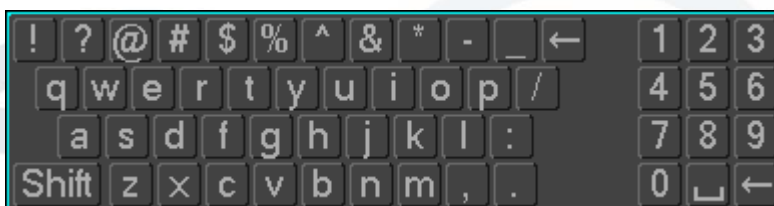
Select controls of the current coordinates to move.

Mouse Drag

- Select area to detect.
- Select area to shelter.
- Select zooming function of PTZ control.

1.5 The Input Method

In the input box, you can select figures, symbols, English capitalization and the input of Chinese. Click the mouse to complete the input.”← “represents the backspace and “_” represents a space.



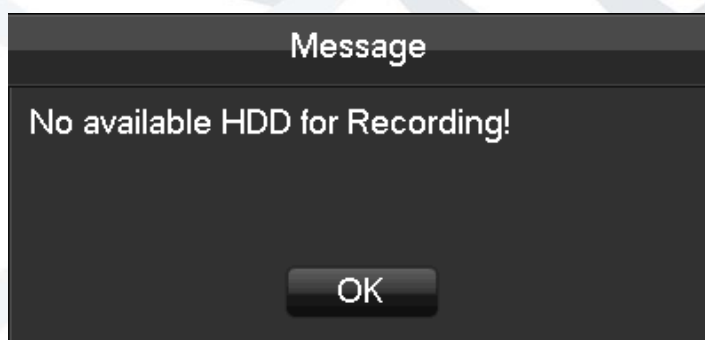
1.6 Power On/Off

1.6.1 Power On

Install the DVR correctly and the connect power. When the light comes on, the DVR will boot automatically.

DVRs will detect the hardware when power on and the process will last about 20 Seconds. After the detection, the DVR will make a “Buzzing” sound and enter a multi-screen real-time video surveillance status mode.

If the hard disk boot is not connected, the following interface will pop up.



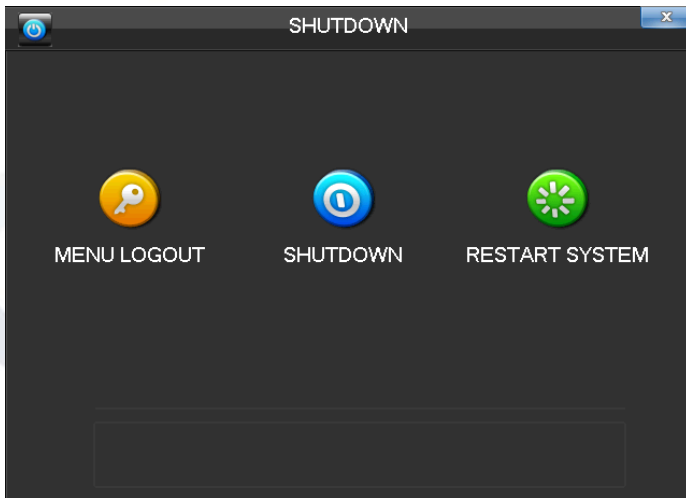
The real-time multi-screen mode view:



 **NOTE: Power supply has to match with DVR, any other substitutes are not allowed.**

1.6.2 Power Off

【Main Menu】 → 【shutdown】









 **NOTE: Change HDD after close the device.**

1.6.3 Power recovery


Reboot after an unexpected power shortage or forceful shutdown, the DVR will save the recorded footage before outage and return to the normal operation mode.

1.7 Icon

1.7.1 The Screen Icons

-  : The channel is recording.
-  : The video of the channel is lost.
-  : Motion detection function is online.
-  : The channel is currently in the monitoring and locked status.
-  : Adjust the size of the logo of the local audio output.
-  : Allow screens to perform a round of the Tour setup.

1.7.2 Operation Icons


: Not selected.

: Selected.


: The drop - down button


: Leave the interface.


: Cancel the settings.

: Set parameters.


: Save parameters

: Restore the factory settings.

: Apply current settings to the system.

: Copy current settings to other channels.

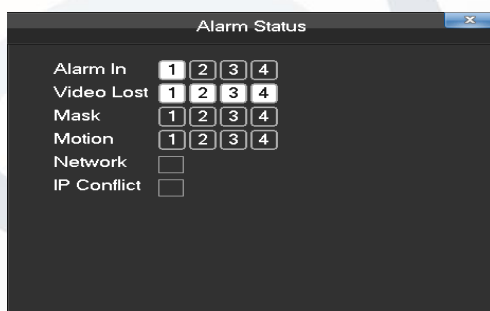
: Enter the configuration interface.

: Select and configure the processing operation triggered by video detection or alarm.

1.8 The Real-time Browser

There are a date, a channel name, a record type icon and a alarm status icon in each real-time monitoring screen. Switch screens by the front panel, a remote control or a mouse.

If screen prompts of external alarm, video loss, occlusion detection, dynamic detection, network connection and IP conflict is set, the following interface will pop up when the relevant alarm occurs.

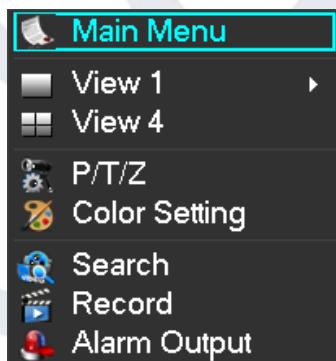


2 OPERATIONS GUIDE

2.1 The Right-click Menu

Enter the real-time browsing interface. Click the right button and pop up a menu as shown in the figure.

The Right button menu:



2.1.1 The Screen Switching

Users can choose single, four, nine or sixteen channel.

2.1.2 Color setting

Adjust the specified screen (single screen) image color hue, brightness, contrast, saturation, gain and white-level parameters set two time periods according to the local environment difference between day and night for each adjustment period set, the device will automatically switch to the best video quality.



【Period】 : Two periods can be set according to ambient light during the day and night, device will automatically switch configuration time. Need to select the Enable box.

【Hue】 : Adjust according to image color cast.

【Brightness】 : Visual image brightness, according to the environment, reduces or increases the brightness of the image to try to make it clearer.

【Contrast】 : Adjust the black and white of the image (the greater the ratio, the brighter the image).


【Saturation】 : Image color purity, the greater the value, the images will become more colorful.

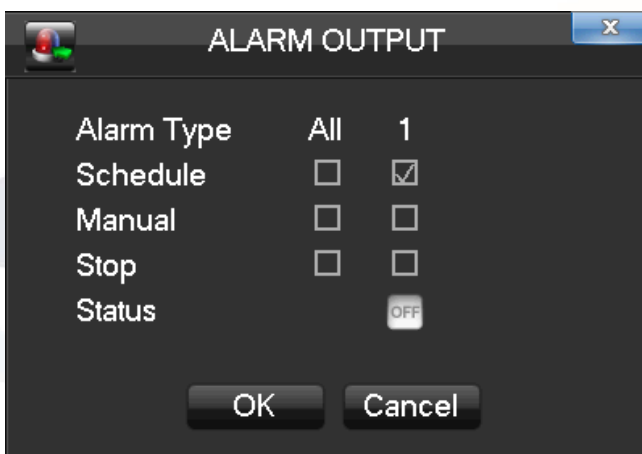
 **NOTE: Different mode different function**

2.1.3 The Video Inquiry

Refer to Chapter 2.3.

2.1.4 Alarm output

 **NOTE: the manual recording requires users have the highest priority.**
In the real-time monitoring screen, right click and select [record] to enter the following interface.



【Channels】 The number of channels that are in alarm status.

【Schedule】 Alarm output is in control of alarm configuration.

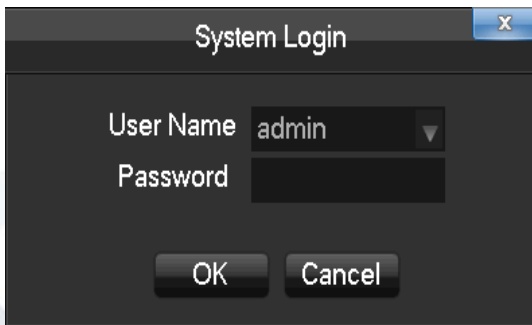
【Manual】 Alarm output is on and the status is active.

【Stop】 Alarm output is off and the status is inactive.

【Status】 The current status of alarm output.


2.1.5 The Main Menu

Left click in the real-time monitoring screen. Input a user name and a password.

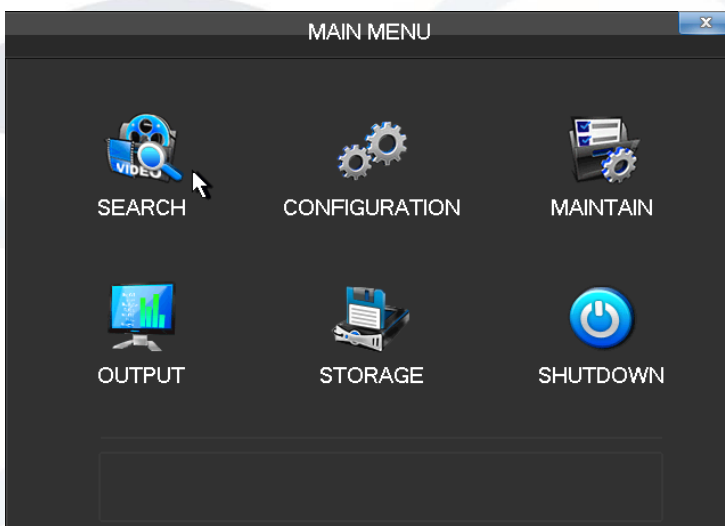


Default users:

User Type	Name	Default Password
Administrator	admin	123456
User	user	123456
Hidden	default	default

 **NOTE: security measures of the password: If a wrong password is inputted three times, the device will produce an alarm sound. After incorrectly inputting the password in five times, the account will be locked. Please change the default password and the user name. Refer to Chapter 4.4.5 for more details.**

2.2 The Introduction of the Main Menu



【Search】 Search records by types, channels, time and playback records.

【Configuration】 Include system, record, network, abnormality, alarm, account.

【Storage】 HDD management and backup

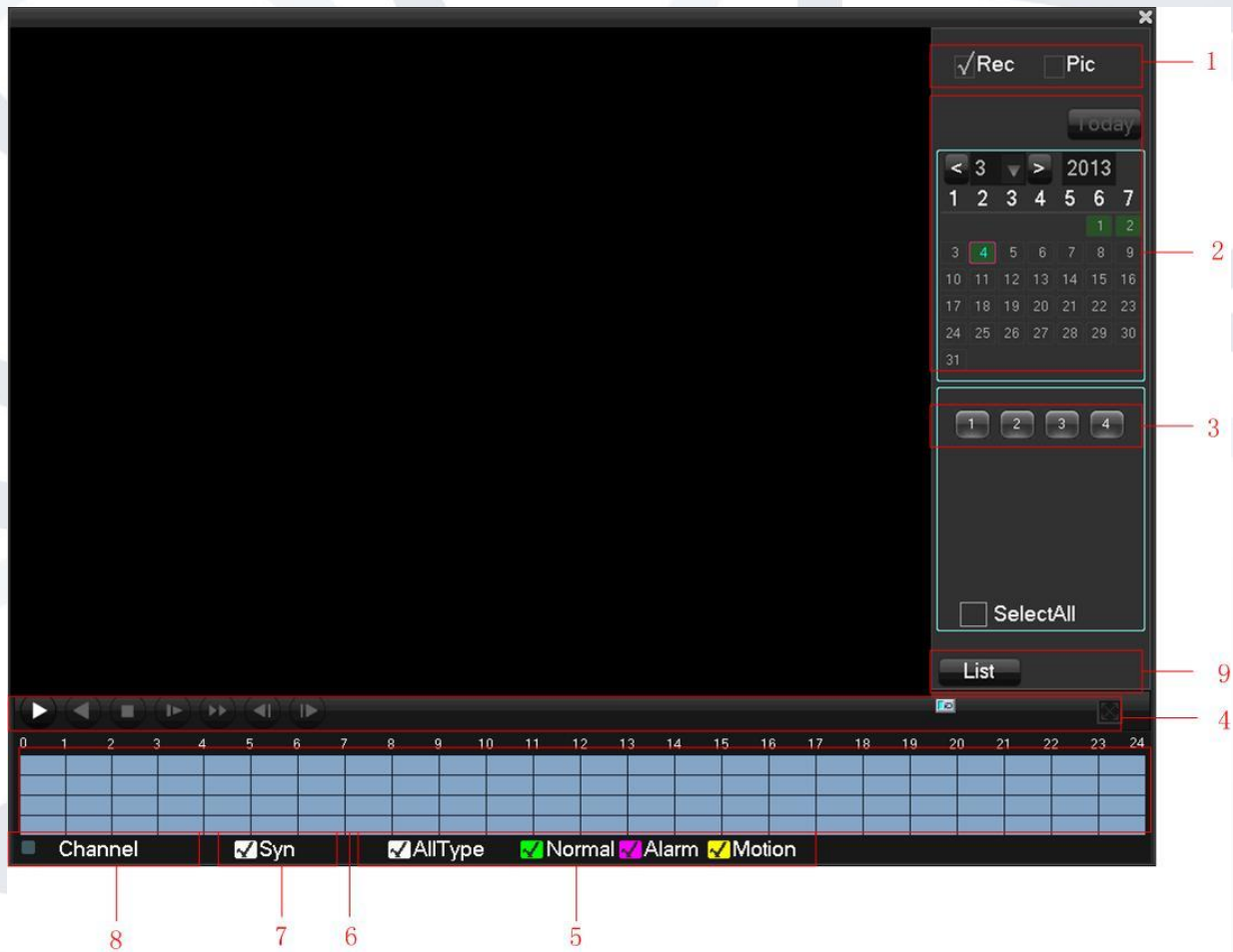
【Output】 PTZ, alarm output, serial and display.

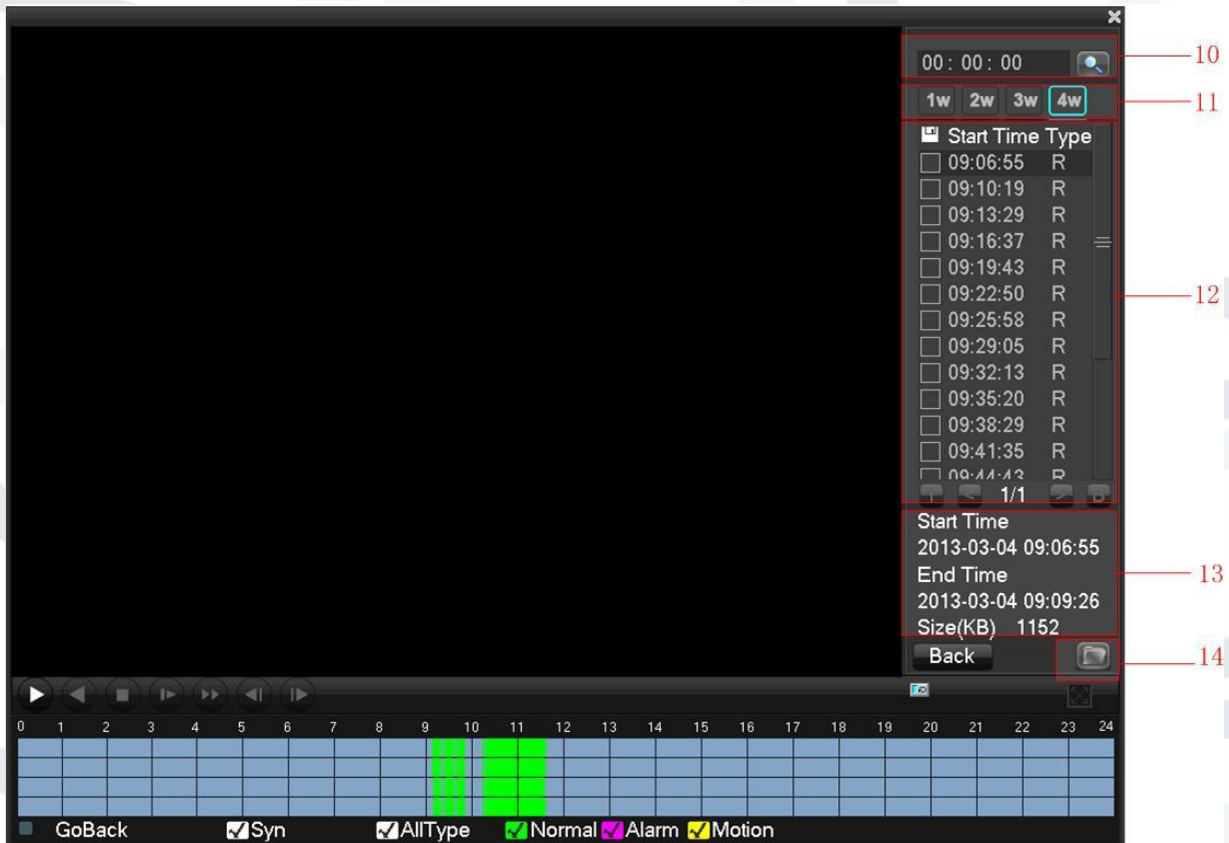
【Maintain】 Display log information, version information, stream statistics, and online user and set the factory default, automatic maintenance.

【Shutdown】 Log off from the user menu, turn off the machine, restart the system, and switch user and other operations.

2.3 The Video Inquiry


In real-time monitoring screen, right click and select **【search】** to enter the searching interface.





Record Search interface description:

Index	Type	Description
1	Record	There are video and pictures types to select. The 'Pictures' feature (local inquiries picture) is not yet open, so it is grayed.
2	Choose the time	Select the records' time.
3	Choose the channels	Select channels desired to query records.
4	Playback controls	It can achieve full-screen and Cycle playing, stopping / playing, pausing, fast playing, slow playing and the previous/next frame on a suspended state.
5	Recording mode	Choose searched recording mode, including whole, outside alarm, motive detection, whole alarm recording.
6	The timeline of the videos	Shows the status information of channels' video recording within one day by using green, red, yellow colours to highlight timeline.
7	Synchronisation	Synchronises all footage within the timeline to the same time.
8	Status	Displays status information of the function keys, which includes the fast-forward speed, slow speed and so on.
9	List	Display the list of recorded files.
10	Time inquiries	Search the records based on the starting time.

11	The channel number	Select the channel number.
12	The list of records	128 video records can be shown in the searching list. Choose file(s) and press enter or double click mouse to view record. File type: R —normal record, A —alarm record; M —motion detection record.
13	Details of the documents	Display the start time, the end time, and the size of the video file.
14	Backup	Tick  to choose backup file in file list box, click backup button, cancel backup file ---click “√” from backup menu “√”.

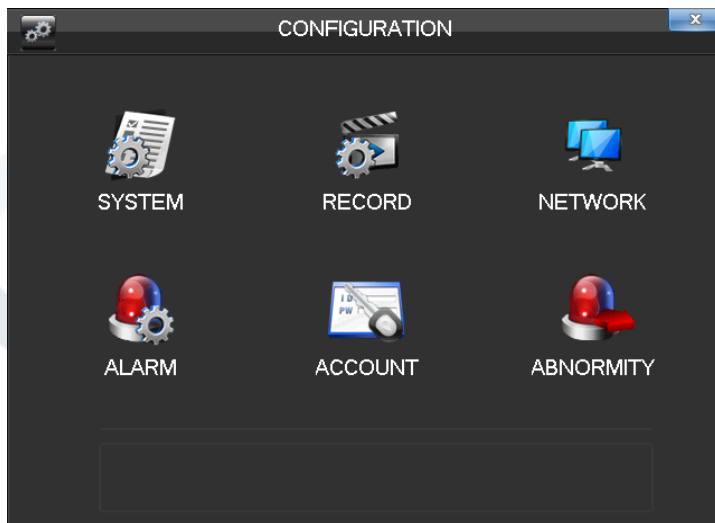
Playback Control:

Key	Description	Remark
Video playback: Fast-forward button	Under playback mode, whilst pressing this key, you can get a variety of fast cycle switching speeds; the fast-forward button can be used as slow-release button or a reverse switch key.	Actual play rate based on version
Video playback : Slow key	Under playback mode, whilst pressing this key, switch through this in a cycle. Supports a variety of slow-release rates. The slow release button can be used as fast-forward button or a reverse switch key.	
Play/pause▶/	Play/pause switch when in slow-play.	
Backward: Backward key	Single left click backward key.	To play in reverse; single click again to stop normal playback.
Manual single frame playback	Single frame playback by clicking and when common playback is paused.	Then click rewind or the single-frame playback function, press the play button ▶/ to enter the normal playback .

 **NOTE:** The player playback control bar shows file playback speed, channel, time, playback progress and other information.

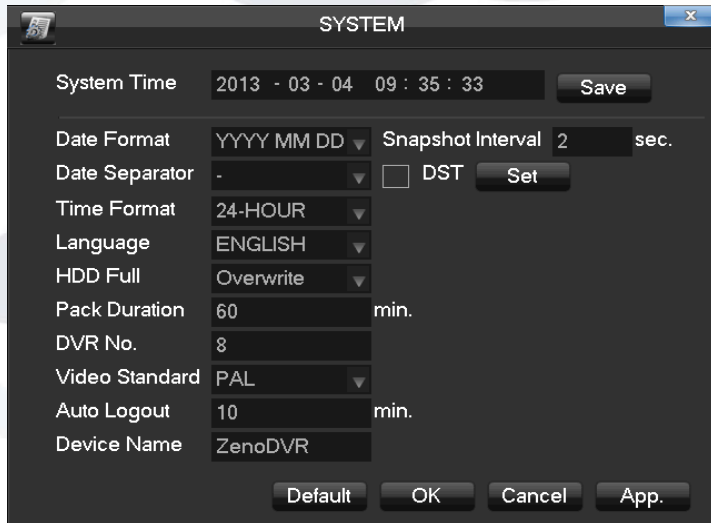
2.4 Configuration

User can get into configuration through the main menu, as seen here:



2.4.1 System

Get into the system configuration:



【Time】 Set the current time and save.

【Date Format】 Modify the date format.

【Snapshot Interval】 The snapshot interval time

【DST】 Select the button and set the starting and ending time.

【Time Format】 24 hr or 12 hr mode

【Language】 Select a language.

【Full HDD】 When HDD is full, there are two options: "Overwrite" or "Stop recording".

If you select "Overwrite", the DVR will overwrite the earliest files and continue recording.

If you select “Stop recording”, the DVR will stop recording.

【Pack Duration】 Set a length for each record. Default is 60 minutes.

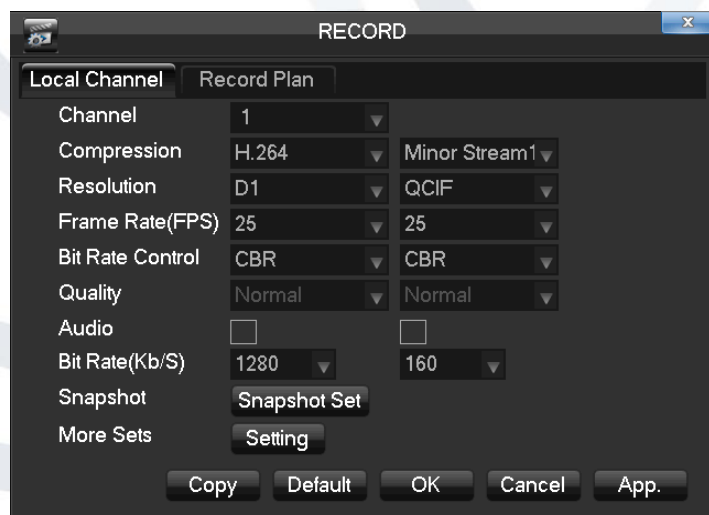
【DVR No.】 The default is 8.

【Video Standard】 PAL/NTSC

【Auto Logout】 This range is from 0 to 60 minutes.

2.4.2 Record

Local channel



【Channel】 Select a channel.

【Compression】 H.264

【Resolution】 The resolution of main stream can be either D1 or CIF. The channel extension stream resolution can support CIF or QCIF.

Frame Rate:

1. PAL system: 25 frames / sec.
2. NTSC system: 30 frames / sec.

【Bit Rate】 Constant Bit rate or Variable Bitrates. There are 6 levels for image quality in Variable Bit rate.

【Audio】 Choose channels to record sound or not.

【Snapshot】 You can set the capture mode, picture size, picture quality and capture frequency.

Snapshot Mode:

1. Trigger capture: Capture picture when alarming.
2. Timing capture: Capture the pictures in channel enabled by setting a frequency.

Picture Size: CIF.

Picture Quality: 6 levels

Snapshot Rate: Set a capture rate for the single channel.

【More Configuration】 Enter the following interface.



【Channel Name Display】 Choose to either show the channel name on the screen or not.

【Date Display】 Show the date or not

【Channel Display】 Drag channel title and save instantly. After quitting by right button, the position of channel title will not vary in displayer or in the monitor (varied position can be shown recorder and WEB interface).

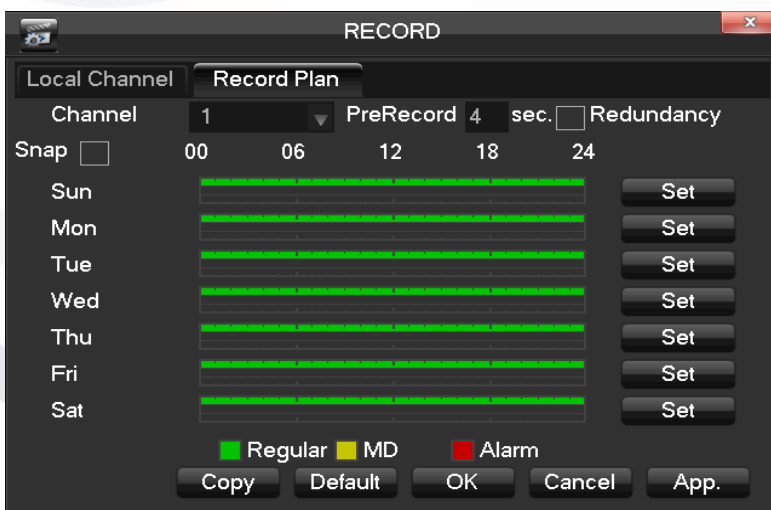
【Time Display】 Drag time title and save instantly. After quitting by right button, the position of time title will not vary in displayer or in the monitor (varied position can be shown in the recorder and WEB interface).

【Video Cover】 4 zones preview and display protect (you can adjust the privacy zone area).

【Preview】 Set the masking zone. Masking zone is shown on the screen when displayed (no masking zone in web and record).

【Monitor】 Set masking zone. Masking zones are shown in the screen when displaying or recording.

Record plan



【Copy】 Copy configuration of the current channel to other channels.

【Channel】 Select a channel. It uses green, yellow and red colours to show motion detection and then carries out regular records correspondingly.

【Copy】 Copy the settings to other channels.

Click the set button to enter the following interface:

Record Type	Regular	MD	Alarm
Period 1 00 : 00 - 24 : 00	<input checked="" type="checkbox"/>	<input type="checkbox"/>	<input type="checkbox"/>
Period 2 00 : 00 - 24 : 00	<input type="checkbox"/>	<input type="checkbox"/>	<input type="checkbox"/>
Period 3 00 : 00 - 24 : 00	<input type="checkbox"/>	<input type="checkbox"/>	<input type="checkbox"/>
Period 4 00 : 00 - 24 : 00	<input type="checkbox"/>	<input type="checkbox"/>	<input type="checkbox"/>
Period 5 00 : 00 - 24 : 00	<input type="checkbox"/>	<input type="checkbox"/>	<input type="checkbox"/>
Period 6 00 : 00 - 24 : 00	<input type="checkbox"/>	<input type="checkbox"/>	<input type="checkbox"/>

Select All
 Sun Mon Tue Wed
 Thu Fri Sat

OK Cancel App.

【Time】 Recording time.6 periods can be set every day.

【Normal】 Normal record.

【Moving Detection】 Moving detection.

2.4.3 Network

Set the DVR network parameters in “Network” interface. The default IP address is 192.168.1.88

Base setting

NETWORK

Base Advanced Push

Network Card Type Wired Network

DHCP

IP Address 10 . 12 . 3 . 177

Subnet Mask 255 . 255 . 0 . 0

Gateway 10 . 12 . 1 . 1

First DNS Server 8 . 8 . 8 . 8

Alternate DNS Server 192 . 168 . 1 . 1

Physical Address E0:61:B2:10:1D:6B

Default OK Cancel App.

【DHCP】 Enable the DVR to obtain an IP address automatically. If this is enabled, the DVR will reboot and search for a DHCP server, and then assign a dynamic IP address. The dynamic IP address will be displayed in the menu. Enter a static IP address if there is no DHCP service available. If you are using the advanced feature PPPOE, then the IP/mask/gateway and DHCP are unable to be changed.

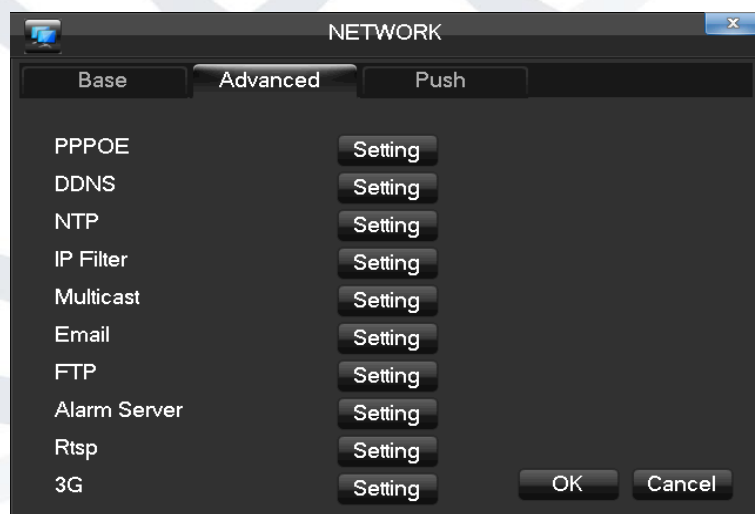
【IP Address】 use (▲▼) or input numbers to modify IP, then set **【subnet mask】** and **【default gateway】** for this IP.

【First DNS Server】 DNS server IP.

【Alternate DNS Server】 DNS alternate IP

【Physical Address】 physical address of current net port

Advanced



【PPPOE】 Enable PPPOE.

Input PPPOE's username and password provided by ISP.

Operation: Using this feature, the DVR will automatically obtain a public IP address from your ISP. You can then visit the web interface of the DVR by typing this IP into Internet Explorer.

【DDNS】 Enable the DVR to register a DDNS hostname, which runs on a fixed IP address web client.

1. Select DDNS type (NO-IP DDNS, Dyndns DDNS, FNT DDNS and so on).
2. Input the registered server's IP, port, username and password.
3. Once completed, you can login in the Web client by inputting the domain name in to your web browser.

Refer to Chapter 6.1 about more details.

【NTP】 On/Off NTP. The network time protocol allows the DVR to sync with NTP server time automatically.

Server IP: Input IP of NTP server.

Port: The default port is 123.

Update cycle: The interval time is between 1 to 65535 min.

【IP Filter】 DVR authority management. If you enable the white list, only the filled IPs can be connected. This system supports a max of 64 IPs.

【Multicast】 *Transfer Capability Set*: Enable the max connection and set network connection NUM, network connection NUM, transfer mode and LAN download.

Port Set:

1. TCP Port. Default: 8000.
2. HTTP Port. Default: 80.
3. UDP Port. Default: 8001.
4. UPNP Port Mapping: Enable the function and make sure UPnP feature is enabled on the router.

【Email】 Enable the function. Set the SMTP server's port, username, password, the sender's mailbox and receiver's mailbox.

【FTP】 Choose to upload records or images.

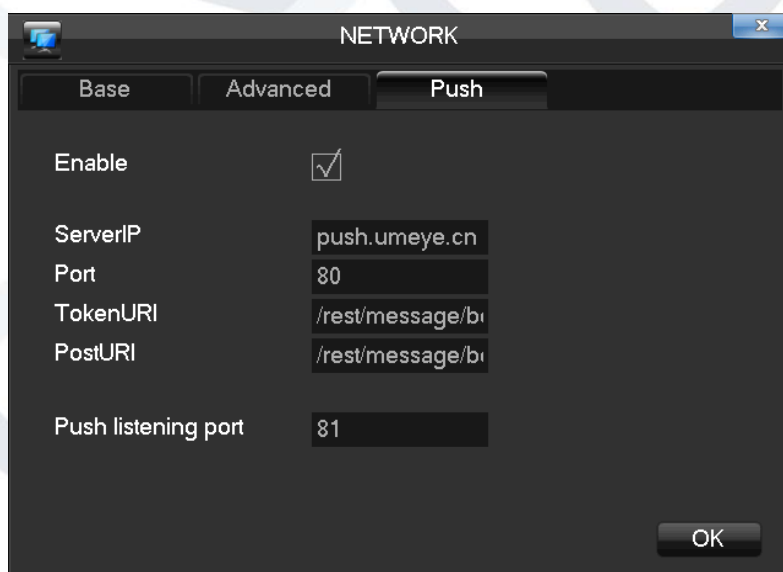
1. Set FTP server's IP address and port (Default: 21).
2. Create an account in FileZilla Server on the computer.
3. Fill in the username, password and remote directory which have been created.
4. Set file length, channel, time for recording, type and date and so on.
5. Tick alarm, motion and general records or images to upload.

【Alarm Center】 Set the platform software's IP, port, and time for uploading the alarms.

【RTSP】 The Real-time streaming protocol and the transmission of multimedia data protocol can be used to support the RTSP protocol player to play.

【3G】 Supports 3G card in dial-up network to provide remote equipments access.

Push Service



The device supports the use of a push service and the smart phone mobile client. The interface is mainly used to open the push service. The current mobile client associated with the DVR, local real-time alarm information will also be sent to the phone even in the case that the mobile client is unopened.

2.4.4 Alarm

Detect

- 【Motion detection】 motion detection and alarm
- 【Zone setting】 22*18 =396 zones mask
- 【Sensibility】 6 grades
- 【Management】 as same as local alarm
- 【Preview】 alarm preview
- 【Video lose】 detect video loses and alarm

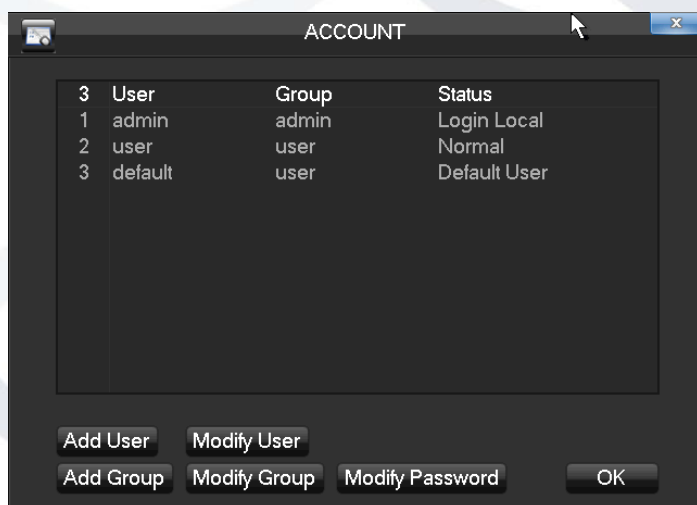
2.4.5 Account

⚠ NOTE: Group and user names can be from 1-6 characters in length. Valid characters include letter, numbers, and limited symbols: underline, subtraction sign, dot, you may not use a space as a leading or ending character.

There is no limit to the number of groups or users. By default there are two different group levels: admin and user.

User management determined upon two levels: the group and the user level.

Group and user names cannot be duplicated, and each user can only belong to one group.



【Add users】 Add group member information and set authorities.

- **Default user:** admin, user and default. The password of the first two usernames is **123456**. "admin" has advanced authorities. "user" only has surveillance and playback authority.
- **Hidden default:** operate in password-less login mode, which you cannot delete. The DVR login name is automatic if no user logs in, user can revise limits of power then operate some without login.
- Enter **【Add users】** to input username, password and select group and reusable options. Reusable allows the account to be used by multiple logins.
- Users can only belong to one group. User rights cannot exceed group rights.

【Modify users】 Modify existing group member information and authority.

【Add group】 Add group and set group authorities.

Set a group and authorise 60 items including control panel, shut down, live view, playback, record, record backup, PTZ control, account, system information, alarm in/out setting, system, search log, log delete, upgrade, operation authority, etc.

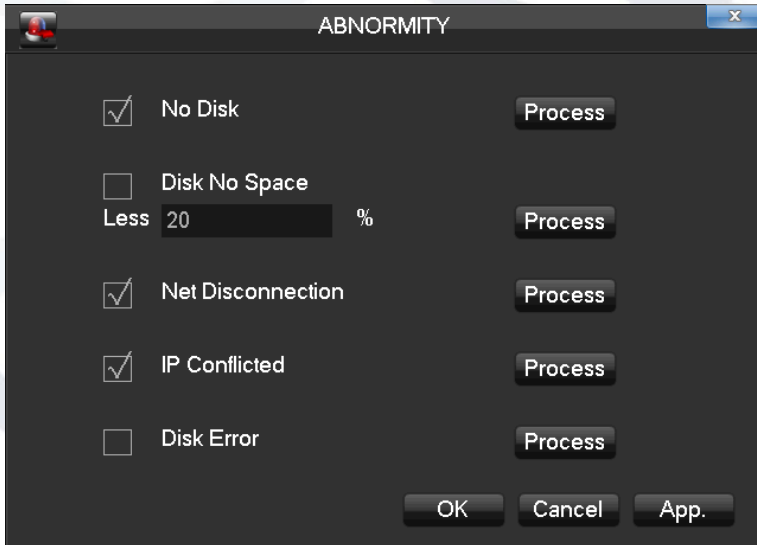
【Modify group】 Modify existing groups information.

【Modify Password】 Change the password.



NOTE: Password can be up to 6 characters long. The account with management authority can change other users' passwords.

2.4.6 Abnormity



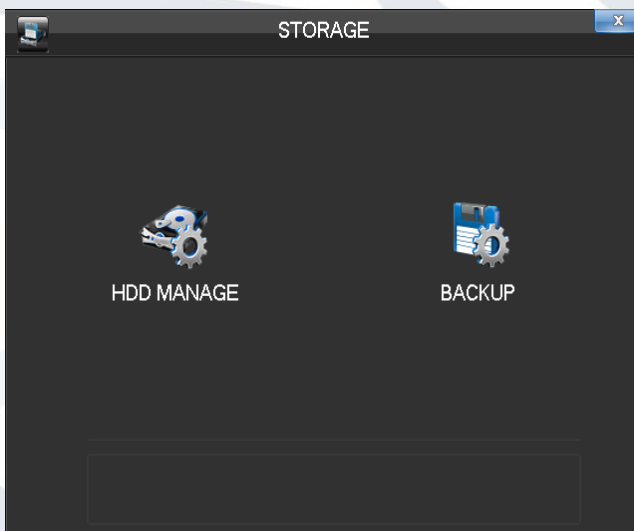
Firstly enable: **【No Disk】** , **【Disk No Space】** , **【Network Failure】** , **【IP Conflict】** and **【Disk Error】** .

【No Disk】 alarms when HDD is not present or it can't be detected.

【Process】 You can choose **【Alarm Output】** , **【Display On Screen】** and **【Send Email】** and **【pushed to phone】** to show abnormal events occurring.

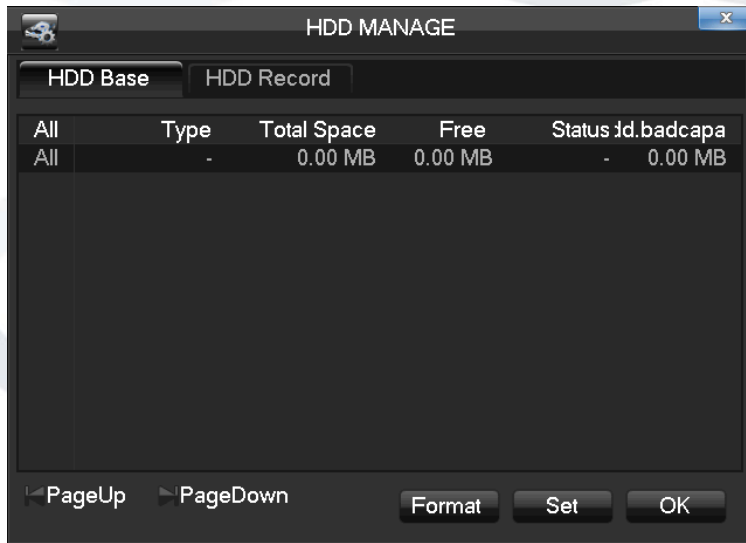
2.5 Storage

2.5.1 HDD Management



Base Configuration

“Base Configuration” is the status & setup menu, and shows DVR storage capacity, available space and working status.

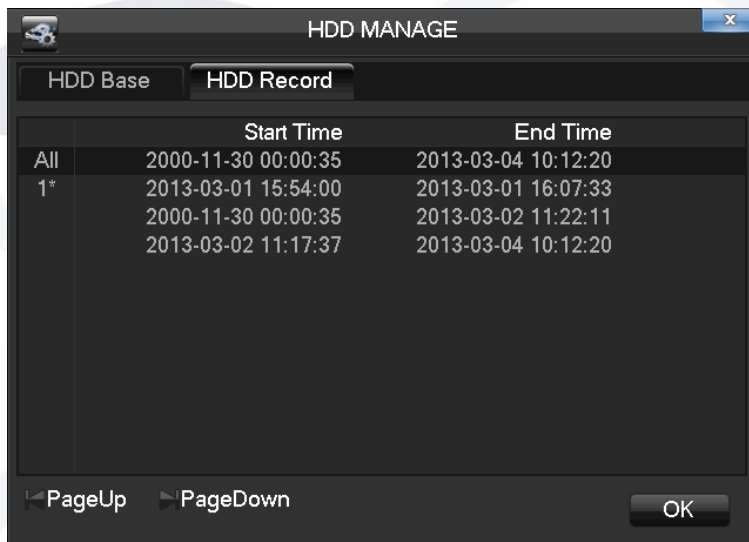


【Format】 it is possible to format an individual HDD.

⚠ NOTE: Hard disk format operation will result in the loss of video data.

【Set】 to set HDD as read-write, read only or redundancy mode. In read only mode, video data cannot be over-written.

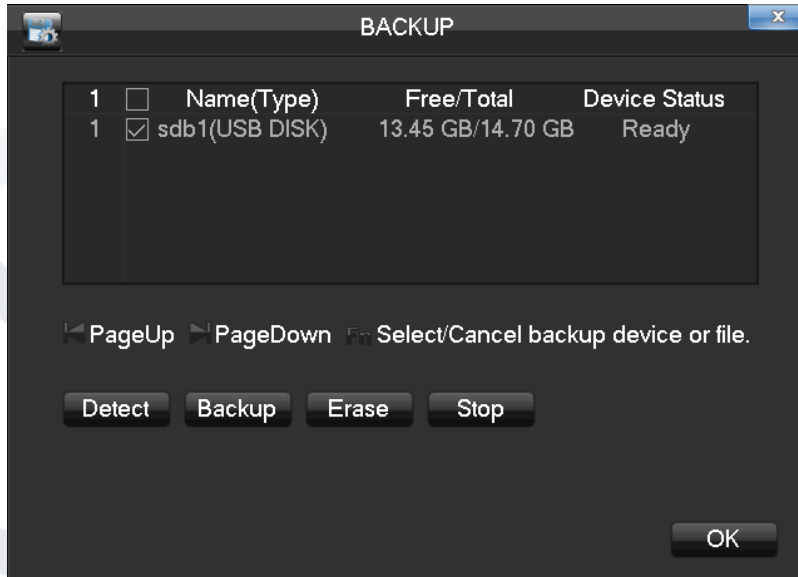
HDD Record



This menu screen will show the start and end times of each segment of video that is recorded to the HDD.

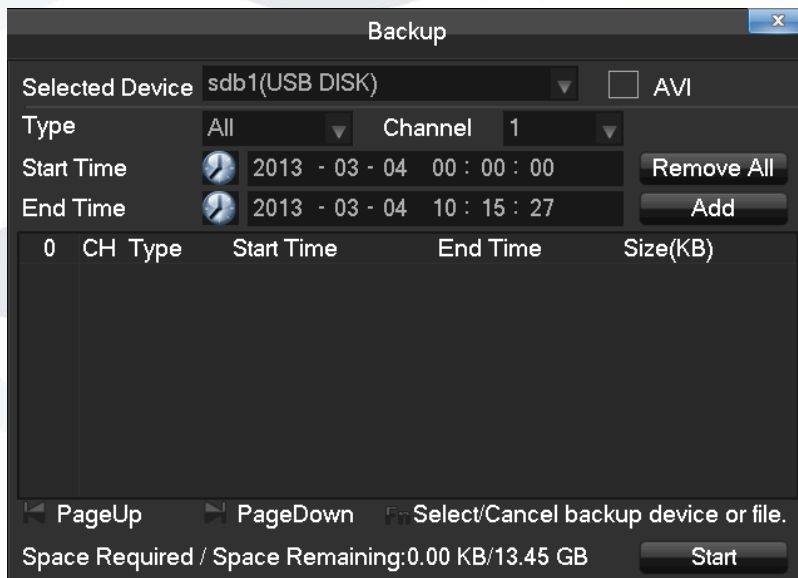
2.5.2 Backup

Connect an External USB device with the USB port to backup in the “Record Backup” menu.



【Detect】 Identify external USB device and display the device information.

【Backup】 Tick the external device and click **【Backup】** to enter the backup menu .



Select the records' starting and stopping times and click **【Add】** to add in the list.

Click **【Delete】** to clear the file list.

Tick the record you want and click **【Start】** to backup and display time remaining.

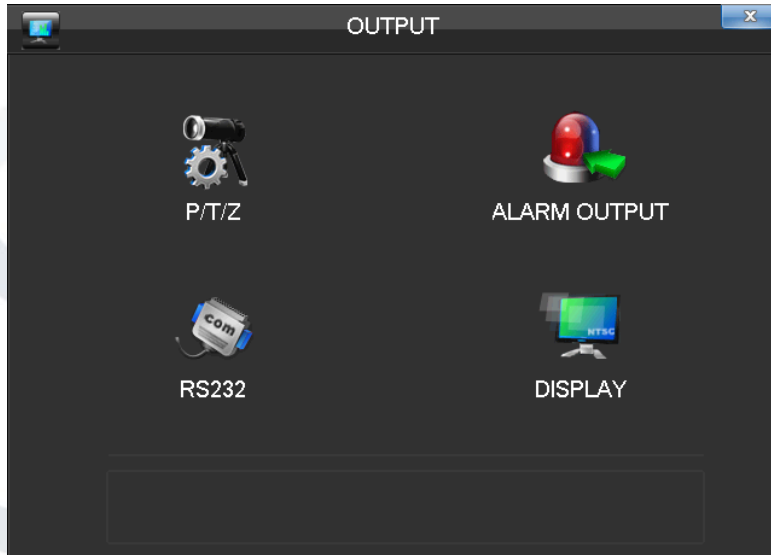
【Delete】 delete all data in USB backup device



NOTE: The **【Delete】 operation will cause loss of permanent recorded data.**

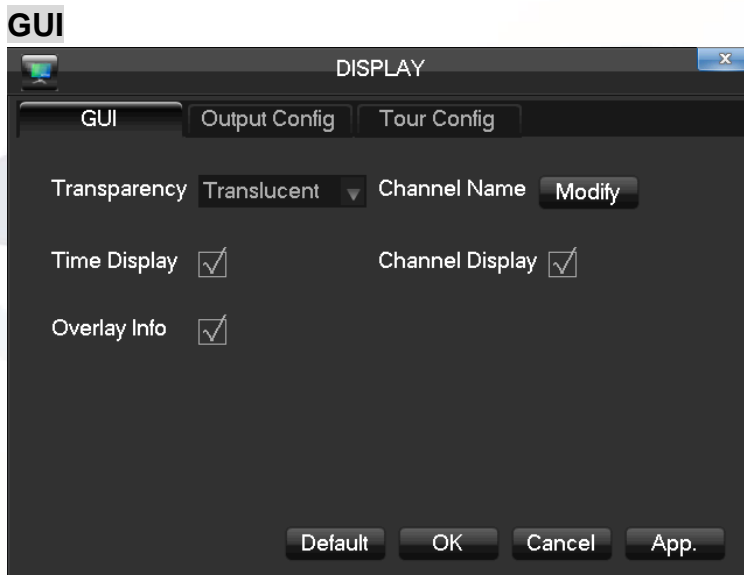
2.6 Output

The following **Error! Reference source not found.** shows the peripheral management interface.



2.6.1 Display

Display mode can set the unit's display.

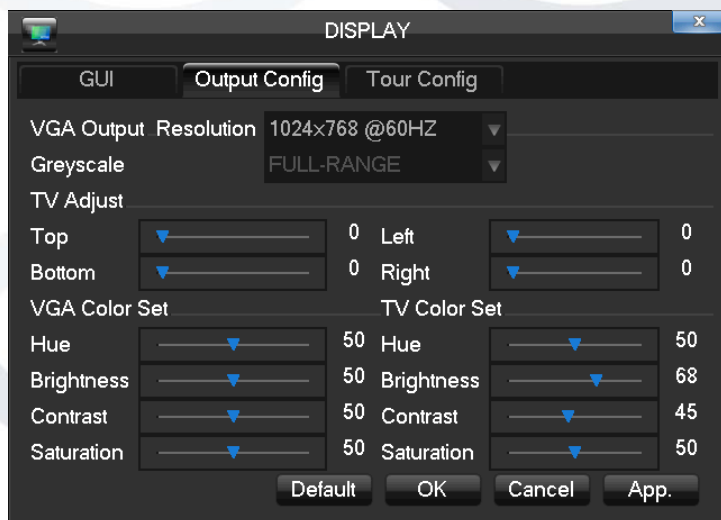


【Transparency】 4 grades.

【Channel Name】 Modify the channel name.

Options available to tick: **【Time Display】** , **【Channel Display】** and **【Over Info】** .

Output Configure



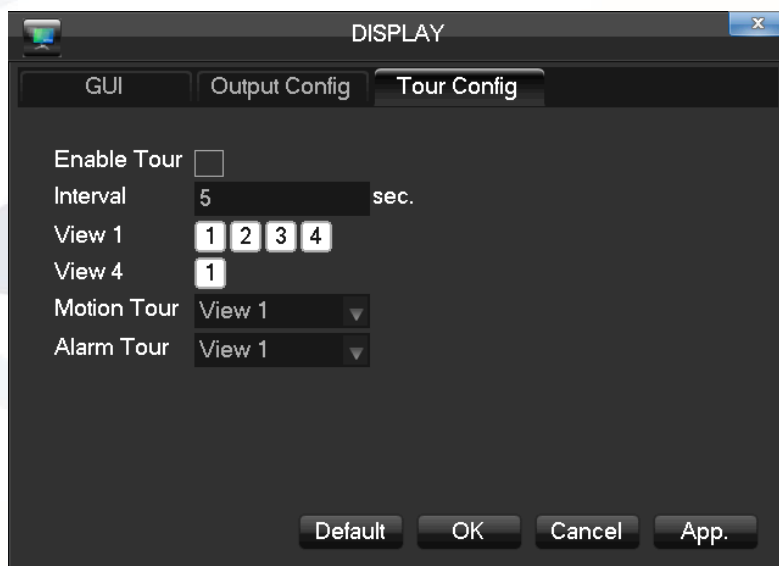
【VGA Output】 Select VGA resolution and refresh rate. Default is 1024x768@60Hz.

【TV Adjust】 Adjust TV output area. Modify the image to the right size for monitor.

【VGATV Color Set】 Adjust displayer's hue, brightness, contrast, saturation

【TV Color Set】 Adjust monitor or TV's brightness, contrast, saturation


Tour configuration



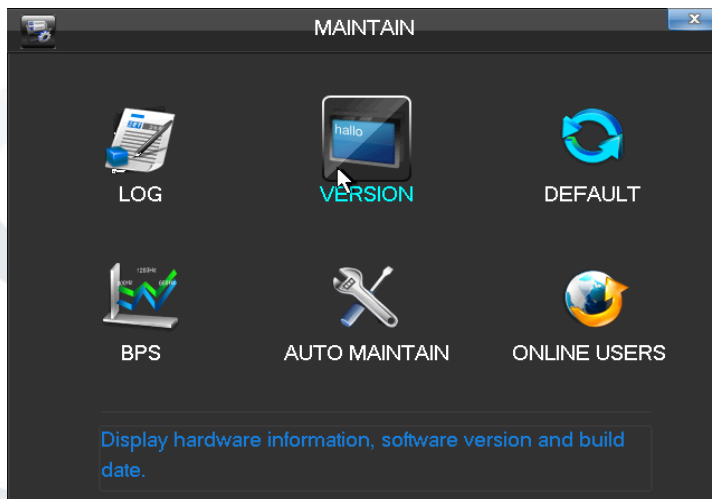
Enable video display touring and interval between rotations. The time is within 5-120s. The mode includes single screen, four, eight, nine, sixteen screen.

【Motion Tour Type】 Set the motion detection tour mode.

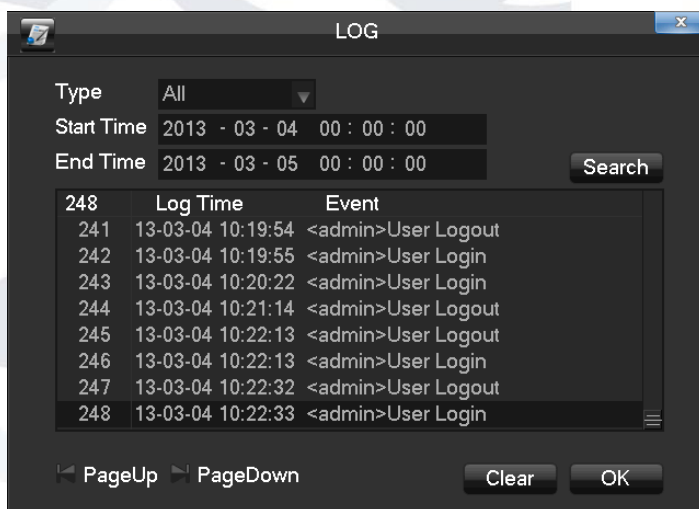
【Alarm Tour Type】 Set the alarm tour mode.

 **NOTE: Shortcut Setting:** click the button at the top right corner of the monitoring picture or press the Shift Key to switch, to control the tour.

2.7 Maintain



2.7.1 Log



Select the type and time press the Find, the system will display the log in tabular form, you can also click the backup button to export the log backup to your computer.

【Type】 System operation, configuration, data management, alarm event, recording, user management, log delete and document operation can be selected. Choose time to filter the log list.

Click "Delete" to delete all logs.

2.7.2 Version

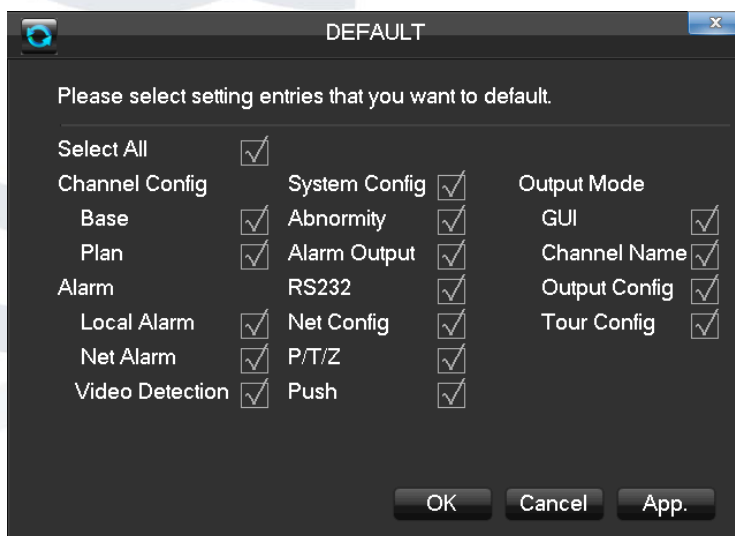
【Version】 Show features, software version etc.


【upgrade】 Connect a USB flash device which contains the upgrade firmware and click “Upgrade”.

 **NOTE: Update may cause the startup failure. Please operate under professional direction.**

2.7.3 Default

【Default】 Restoring the default settings of the following parameters.



 **NOTE: Menu transparencies, language, time format, video format, IP, user ID, are not restored.**

2.7.4 BPS

【BPS】 Show video's size, data rate of each channel by wave form.

 **NOTE: Estimated value just for reference**

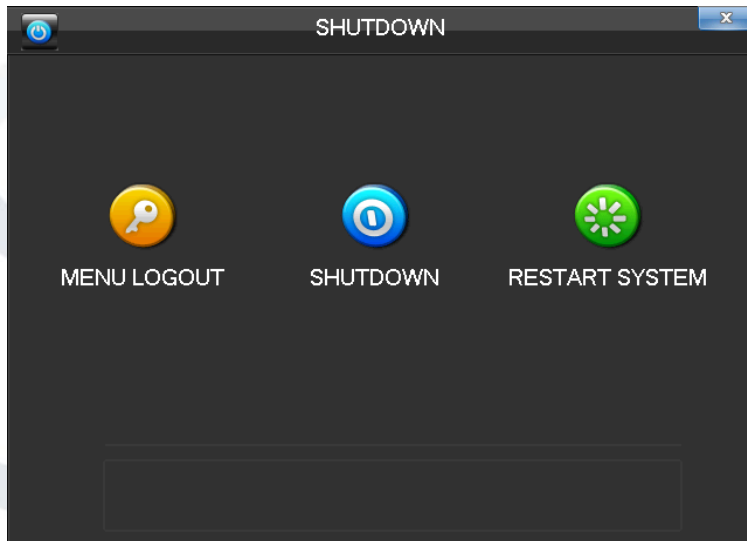
2.7.5 Auto Maintain

【Auto Maintain】 Set auto maintenance items.

2.7.6 Online User

【On-line Users】 Display the current online user's IP.

2.8 Shutdown



【Menu Logout】 Log out of the current user.

【Shutdown】 Shutdown the DVR

【Restart System】 Reboot the DVR

3 WEB AND CLIENT

3.1 Web Operation

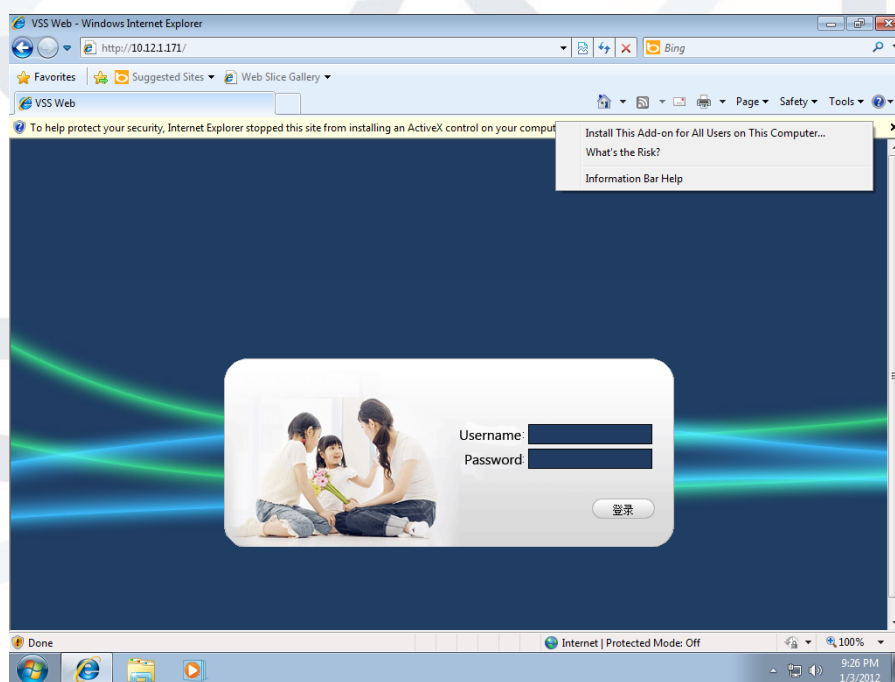
3.1.1 Network Connection

1. Check B-Lamp on front panel, light indicates connection.
2. Set IP, subnet mask and gateway for computer and DVR. Please assign the same segment IP address without using the router, need to set the appropriate subnet mask and gateway with router.
3. To view the details of DVR network configuration please navigate to:
【Configuration】 → 【Network Setting】
4. Ensure the IP is correct and check whether the DVR is on the network by using the Windows command “ping” in the ‘CMD’ window.

3.1.2 The control installation and the user login logout

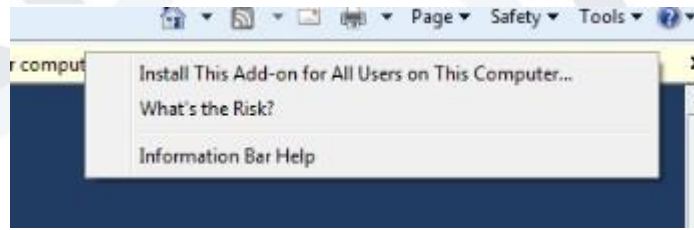
Users can remotely access the DVR via **Internet Explorer**, assuming you have a working and correct network configuration.

The following interface will pop up when you access the IP address in Internet Explorer.



Login screen

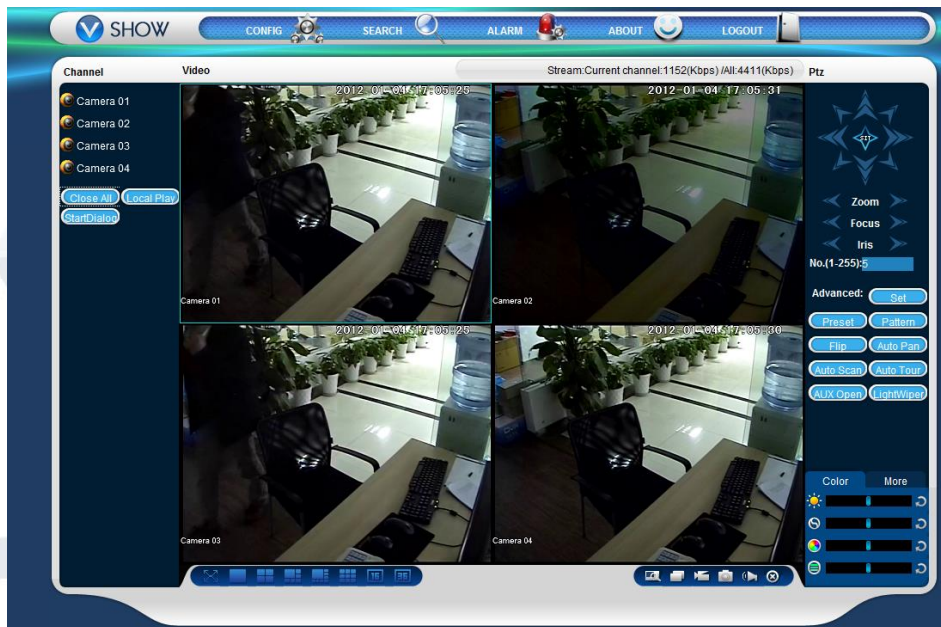
Install ActiveX: Right click and choose install. If installation is blocked by Windows, please add the IP as a trusted site or lower your Internet Explorer security settings to allow this.



Install Control

The following interface will popup when you input your username, password and click “Login”. Interface like Diagram 5-3 Web Interface when user login successfully. Click “Exit” to quit.

3.1.3 The Interface Of Web Operations



WEB Interface

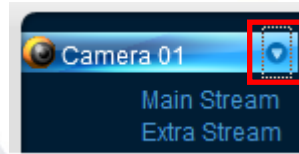
Description:

Index	Name	Description
1	Channel	Channel selection
2	Function key	Local playback: playback local record Open all: play live views in surveillance window
3	Surveillance window	Change window layout
4	Image color & other saturation	Image color: modify brightness, contrast and Other: set capture path, record download path and reboot
5	PTZ control	PTZ control menu
6	Menu	System configuration, record search, alarm setting, exit, etc.

3.1.4 The Real-time Monitoring

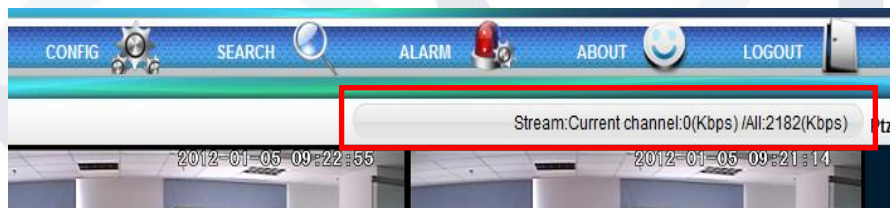
Whilst in the WEB interface, select the focus window within the live window. The focus window has a light blue border.

From the left channel column select channel, as shown in the following interface.



Channel Choices


Click on 2 areas in upper right corner and you can choose to open / close the channel of the main stream or secondary stream. Above the live video window the current DVR's IP and rate information is shown (please see image below).



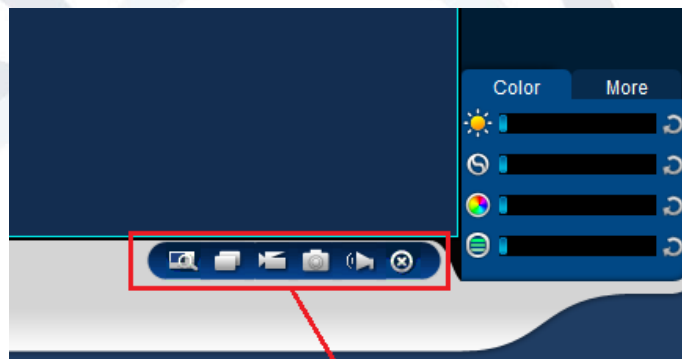
Stream information

Lower left corner shows the current video channel name.

Upper right corner shows the current video time information.







Click “” (Lower left corner of the display window) to switch between single screen and multi-screen.

Lower right corner of the display window will display the function keys, as the following interface (next page).



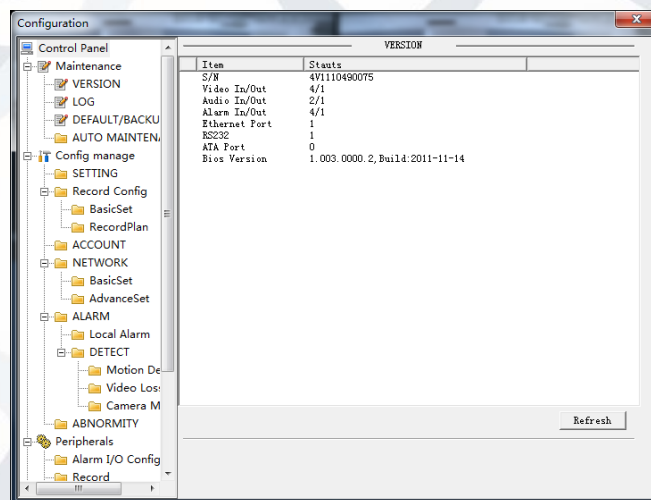
Function Key

Function Key

-  Area zoom: Video images can be enlarged.
-  Multi-screen switch: switch from single screen to multi-screen and vice versa.
-  Local record: save and record video to a local HDD while in a live view. Set recording path in configuration.
-  Capture: capture of the present channel, set the path in “other”.
-  Sound: on/off sound.
-  Off video: off the focus window video.

3.1.5 Configuration

Access DVR’s local configuration menu by clicking the “System Setting” option, for further details please refer to: **【Local operation guide】**



Configuration

3.1.6 Search Record

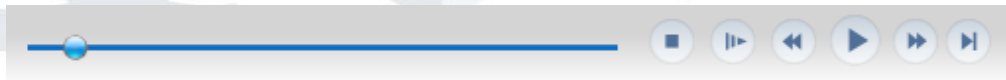
Click the “Search record” option to open the search interface, you can search and operate record, alarm, motion, local record.

Search record

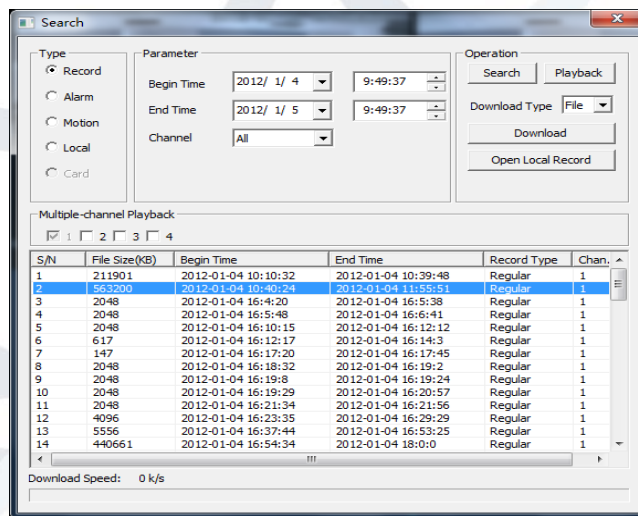
By selecting the record type, start and end times, and click the check button, get a list of files on the DVR. Select the appropriate file and download can be played.

Play

Double click a search result to play in video window. Control the playing video by the control keys on the bottom. At this point, the bottom of the video window will display the video control buttons, where video playback can be controlled.



Download: select a searched video to download to local. The download speed and percentage are displayed on the bottom of the screen.



Searching

3.1.7 Alarm Configuration

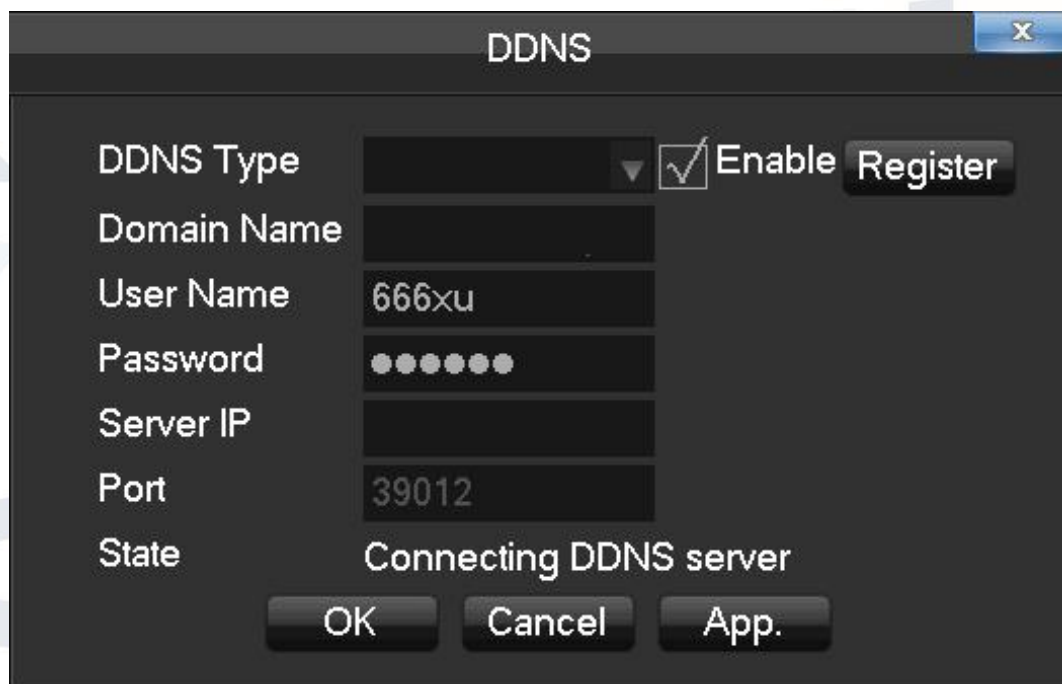
Click the **Alarm** to enter the alarm setup menu, users can set up and operate the alarm mode.

4 FUNCTIONS

4.1 DDNS Function

4.1.1 Summary

Dynamic DNS is a type of system which points the internet domain name to the variable IP address. According to the rule of the internet domain name, the domain name must associate with the fixed IP address. The Dynamic DNS provides a fixed Name server for the dynamic domain, and then needs to guide the domain search to the IP address of dynamic user through the Name server, which can make the outside user connect to the dynamic user's URL.



The DDNS setup window

4.1.2 NO-IP (www.no-ip.com)

Register

Register new username at no-ip, click **【Create Account】**.

Create domain name, click **【Add a Host】**.

Embedded DVR Setting

Open **【Main Menu】** → **【Management】** → **【Network】** → **【Advanced】** → **【DDNS】**
→ **【Enable】**

Name	Configuration
DDNS	NO-IP DDNS
IP	dynupdate.no-ip.com
Port	80
Domain name	xxx.xxx.org
Username	xxx
Password	xxxxxx

4.1.3 Dyndns DDNS (www.dyndns.com)

Register

To login at the Dyndns website, you need to register an account.

Click on the confirmation link, login the account, click **【Add Host Services】** at [My Services], set your own realm name, and then operate according to the procedure.

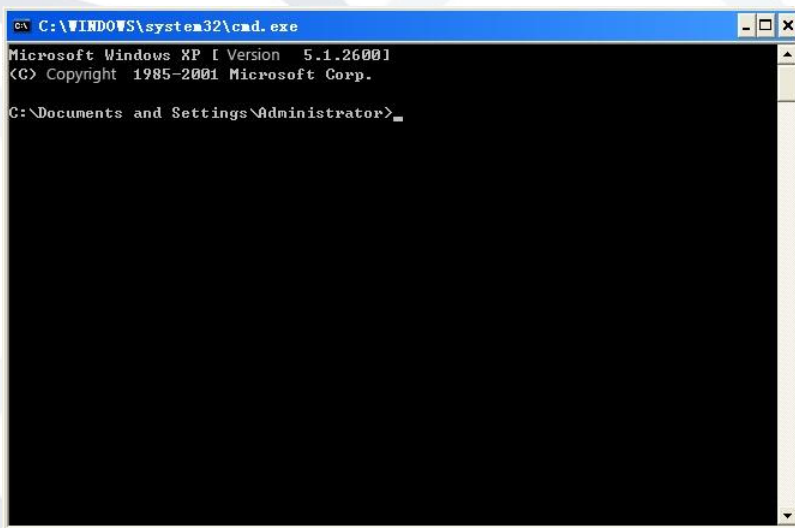
Configure the Embedded DVR

Open **【Main Menu】** → **【Management】** → **【Network】** → **【Advanced】** → **【DDNS】**
→ **【Enable】**

Name	Configuration
DDNS	Dyndns DDNS
IP	Members.dyndns.org
Port	80
Domain name	xxx.xxx.com
Username	xxx
Password	xxxxxx

4.1.4 Test and verify DDNS

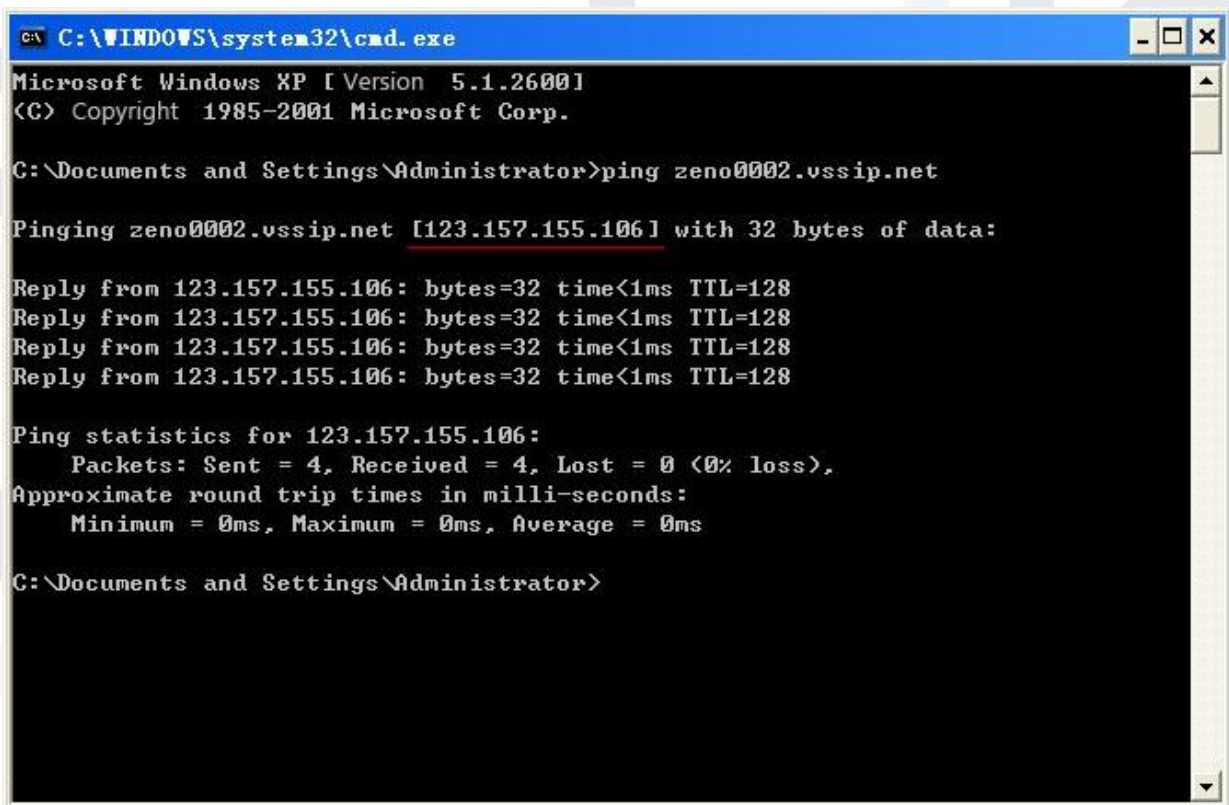
After setting up the embedded DVR, please wait for a few minutes and the analysis records will be updated. Click 'Operation' in the Menu of computer, input "cmd", click "OK" to open a window. See 'cmd' prompt image on the next page.



```
C:\WINDOWS\system32\cmd.exe
Microsoft Windows XP [Version 5.1.2600]
(C) Copyright 1985-2001 Microsoft Corp.
C:\Documents and Settings\Administrator>_
```

'cmd' prompt

Input “ping+ Domain name” then presses Enter, shown in the image below:



```
C:\WINDOWS\system32\cmd.exe
Microsoft Windows XP [Version 5.1.2600]
(C) Copyright 1985-2001 Microsoft Corp.
C:\Documents and Settings\Administrator>ping zeno0002.vssip.net
Pinging zeno0002.vssip.net [123.157.155.106] with 32 bytes of data:
Reply from 123.157.155.106: bytes=32 time<1ms TTL=128
Reply from 123.157.155.106: bytes=32 time<1ms TTL=128
Reply from 123.157.155.106: bytes=32 time<1ms TTL=128
Reply from 123.157.155.106: bytes=32 time<1ms TTL=128
Ping statistics for 123.157.155.106:
    Packets: Sent = 4, Received = 4, Lost = 0 (0% loss),
    Approximate round trip times in milli-seconds:
        Minimum = 0ms, Maximum = 0ms, Average = 0ms
C:\Documents and Settings\Administrator>
```

The computer will analyse the domain name which is set in the DVR and return to the current IP address, underlined in red in the image above. When the IP address corresponds to the embedded DVR's IP address in the Public internet, it means the DDNS had been setup correctly. If they are not, please check the network connection of embedded DVR and DDNS information.

4.2 Port Mapping

Port mapping will map a port, which is outside the web host's IP address, to terminal workstations connected to the local network beyond the port. When the user connects to the port of the IP, the server will automatically map the request to the corresponding workstations inside the local network. With this function, we can map many ports of a workstation's IP address to different workstations' ports inside web. The port mapping can also have other special agent functions, like POP, SMTP, Telnet, etc. Theoretically, it can provide more than sixty thousand ports.

For example, if we want to map a web server which has an IP address of 192.168.111.10, we just need to input the IP address and TCP port 80 into the port mapping chart of the router. There are two ways to map the port: UPnP function automatically map and modifies the router's port mapping chart.

4.2.1 UPNP Function

In order to get a connection to the Embedded DVR through the Public network, we need to set the Router to cross the NAT of Embedded DVR. UPnP can make the NAT cross automatically by the UPnP agreement of Embedded DVR, and you do not have to set the Router.



NOTE: to initiate the UPnP Function, the router must support an enable UPnP Function.

STEP 1:

Connect the Router to the network, get to the Menu of the Router, set the Router, and enable the UPnP Function.

Routers made by different manufacturers may have some differences, please refer to the specification carefully before setting the Router.

STEP 2:

Connect the Embedded DVR to the Router; the configuration will automatically gain the IP address or static IP. After setting up the IP, click the 'Advanced' option and get to the XXX, ports, multicast, etc. Choose 'Enable' at the **【UPnP port mapping】** option.

STEP 3:

Enter into the Router management interface; detect the port if there is already a Port mapping. If there is, it shows the settings in the UPnP all completed.

STEP 4:

Input the IP address in Internet Explorer, and add port number of the Embedded DVR, for example: 155.157.12.227:81. If you want to enter via the Client Software then you will need to use the TCP port offered by the outer net.



NOTE: if there are a few embedded DVRs that need to set the UPnP function, in order to avoid IP conflict, set the ports of embedded DVRs to different ports numbers. Otherwise, it will choose the embedded DVR port set preceded as the first choice.

4.2.2 Manual port mapping

The first step

Connect the Embedded DVR to the Router and set the static IP.

The second step

Log in to Router, enter into the configuration menu of Router, and set the options in the menu. Then get to port, set the IP distributed by the Embedded DVR, and set port mapping, add HTTP and TCP port into mapping list.

The default access ports of the Embedded DVR include HTTP port 80 and TCP port 8000. If the ports are occupied by other devices, please modify the default port of the embedded DVR into the other vacant ports.

The third step

Input the public net IP address in Internet Explorer, and add the port number of the embedded DVR that you want to access after the IP, for example:

http://155.157.12.227:81. If you want to access via the Client Software, you can use the outer net TCP port directly to do so.



NOTICE: for detail configuration setting, please refer to the user manual of Router.

4.3 NTP function

Enable NTP function; synchronise the time with both the DVR and GPS clock server, to ensure the accuracy of device time.

4.3.1 Internet configuration

Go to the **【CONFIGURATION】** → **【NETWORK】** , choose **【Advanced】** , and then choose **【NTP】** to set.

After the device has accessed the Internet, the NTP server can use the standard NTP server to obtain the time. Input the IP address and domain name of relative server at NTP setting.

Activate NTP, click to choose “Enable”.

The range for changing the time is 1 to 65535 minutes.

4.3.2 Intranet Configuration

If the DVR works whilst running with the intranet, users can set up a privately-owned server as clock source. The NTP address in DVR configuration will fill in privately-owned NTP address that work.

A Privately-owned NTP server can adopt standard NTP products, which means it can use PC workstations to check for the correct time. Please refer to instructions below when adopting a PC system as a NTP server.

NTP Server Set Up under Windows

1. “Start” menu → “Run” (or Win+R), input “regedit” to get into REGEDIT.
2. Build a new key assignment of the DWORD Value below.
3. **HKEY_LOCAL_MACHINE\SYSTEM\CurrentControlSet\Services\W32Time\Parameters registry sub key;**
4. Change the value to 1, and save.
5. Restart the computer.

4.4 Voice Intercom

4.4.1 Summarise

Embedded DVR Bidirectional Talk: user can talk to remote client software or Web via the DVR audio input and output ports. User can also listen to the voice from the Client Software and the WEB via the DVR audio output ports.

There are two types of bidirectional talk; sharing and standalone.

4.4.2 Configuration

Local configuration

Connect a microphone to the MIC input port, connect loudspeaker to the audio output port.

 **NOTE: local output needs active audio output device.**

Remote PC Configuration

Connect microphone and loudspeaker to computer.

Enable bidirectional talk in the IMS software or WEB.

4.5 HDD Redundancy

HDD redundancy function can backup the recording file. Users can then retrieve files via the HDD redundancy if the main HDD damaged and so preventing lose of data.

The hard disk redundancy function is found through the designated channel data double backup in the HDD, so the DVR needs a standalone HDD for the redundancy function.

HDD redundancy configuration

Open the main menu and enter into the storage configuration, choose one of the HDD as the redundancy HDD and select one to set.


The redundancy HDD must be an independent HDD. User can set several HDDs as a redundancy HDD group. Once a HDD is assigned as redundancy HDD, the recording data can be saved in both the normal HDD and redundancy HDD.

Data stored on the redundancy HDD should automatically cycle coverage. Cycle period depends on the recording data and the redundant HDD's capacity.

Channel redundancy configuration

The user can choose which video channels to record to the redundancy backup HDD.

Please go to **【Configuration】** → **【Record】** , choose redundancy channel, check mark **【Redundancy】** .

 **NOTE: the data in channel turn off redundancy only is recorded in normal reading and writing HDD if the redundancy is not enabled.**

Retrieve HDD redundancy

The user can retrieve the backup recording data from redundancy HDD when the RW HDD is damaged or data lost. Firstly, shut down DVR and remove damaged HDD, then restart DVR;

Secondly, Get into **【Main menu】** → **【Storage】** , set redundancy HDD as a reading and writing HDD, then it can be searched.

4.6 HDD S.M.A.R.T

S.M.A.R.T (Self-Monitoring, Analysis and Reporting Technology)

S.M.A.R.T HDD can analyse the head, disc, motor, circuit operation, history and default security values via the monitor instruction in HDD and surveillance software. An alarm will be sent to the user automatically when the value is outside the scope of a low alert security situation.

Detection parameters of Seagate HDD for example are divided into seven: ID detection code, Attribute Description, Threshold, Attribute Value, Worst, Date, and Status.

1. ID detection code

The ID detection code is not always the same, the manufacturer can use different ID code or increase/decrease its quantity according to the detected parameter's quantity.

For example: the ID detection code of WEASTERN DIGITAL's product is "04", the parameter is for Start/Stop Count, but the parameter has the same code as the Fujitsu's product and means: "Number of times the spindle motor is activated".

2. Attribute Description

Attribute Description: name of detection item. Manufacturer can increase or decrease.

Because the ATA standard updates constantly, sometimes there are maybe different models in same brand, but you must ensure that they are the same major test items specified in S.M.A.R.T. (although different manufacturers have specific naming convention, the essence of monitoring is the same).

- 1: Read Error Rate
- 2: Spin up Time
- 4: Start/Stop Count
- 5: Relocated Sector Count
- 7: Seek Error Rate
- 9: Power-on Hours Count
- 10: Spin up Retry Count
- 194: Power temperatures
- 195: ECC on the Fly count
- 197: Current Pending Sector Count

- 198: Disconnection beyond repair
- 199: CRC cyclic redundancy check
- 200: Write Error Count

3. Threshold

It is specified by manufacturer calculated through a specific formula. If there is an attribute value lower than the threshold it means the HDD has become unreliable and the stored data is very easy to lose. Composition and size of reliable attribute values is different for different HDD. It should be noted that, the ATA standard only provides some SMART parameters; it does not provide a specific value. "Threshold" value is determined by manufacturers based on products' features. Thus, results tested by manufacturer provided detection software are very different from testing software under Windows (such as AIDA32)

4. Attribute Value

Attribute value is the maximum normal value; the general range is from 1 to 253. Typically, the maximum attribute value is 100 (for IBM, Quantum, and Fujitsu) or 253 (for Samsung). Of course, there are some exceptions, for example, some models produced by Western Digital have two different attribute values, and property value is set to 200 when in initial production, but after then it is changed into 100.

5. Worst

Worst value is the largest non-normal value in HDD's running. It is a value to calculate for HDD's cumulative running. It is constantly refreshed according to running cycle, and very close to the threshold. Whether the HDD is normal by S.M.A.R.T analysis is based on the comparison with threshold. The maximum value appear when new HDD start to use, which would continue to decrease with the everyday use or error happen. Consequently, larger attribute values mean better quality and higher reliability; smaller values mean more possibility of failure increases.

6. Dates

Actual values of HDD's detection items, many items are cumulative values.

7. Status

This shows the current status of every attribute on the HDD, after analysing and comparing the above attribute values by S.M.A.R.T. It is also important information to judge to see if the HDD is healthy or not.

There are three statuses: Normal, Alarm and Error----which is closely related with Pre-failure/advisory BIT.

5 COMMON FAULTS

DVR startup failure or continuously reboots

Possible reasons:

1. The system has been damaged from a bad DVR update.
2. There is a problem with the DVR main board, please contact supplier.
3. There is a HDD error. Replace faulty HDD.

Remote control does not work

1. Check for batteries in the remote control.
2. Check batteries' power level.
3. Check if remote receiver is obscured.
4. Check if the DVR's address corresponds to the remote control address.

DVR cannot control the PTZ camera

Possible reasons:

1. RS-485 cable connection error, A, B ports are inversely connected;
2. PTZ decoder, protocol, baud rate, address are incorrect;
3. Parallely connect a 120Ω resistor to resolve signal reflex caused by too many PTZs on the line.
4. The RS-485 ports in the DVR are defective.

Blurred screen in preview mode

Possible reasons:

Please make sure your cameras match your video format selected in the General menu. E.g. camera is NTSC standard but the DVR is PAL standard, the preview would be blurred.

Blurred screen in playback mode or failure to playback records

Possible reasons:

1. Procedure error, reboot the DVR
2. HDD error, test or change out the HDD
3. DVR hardware failure, contact your local supplier

When you can't connect DVR through network

1. Check the physical network connection is correct.
2. Check the DVR network configuration parameters.
3. Check whether IP conflicts exist in network.

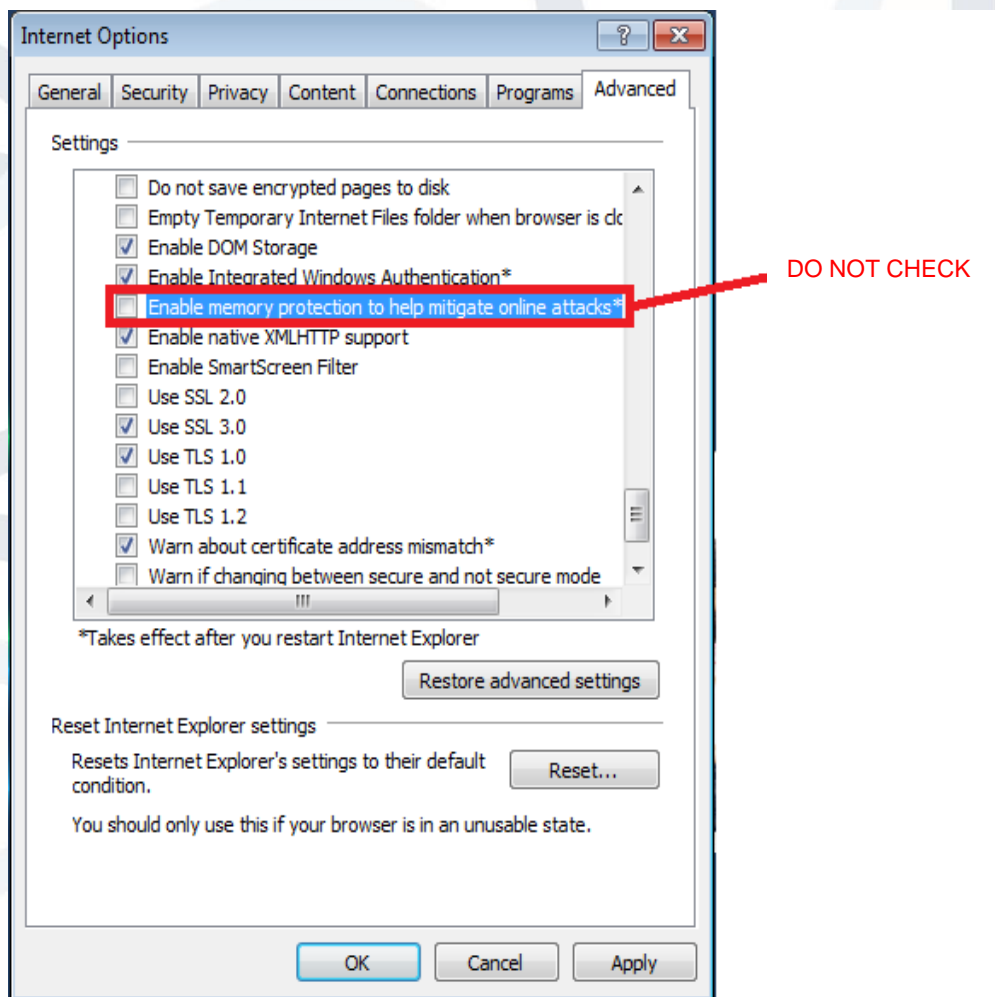
Download recording can not be played

Possible reasons:

1. Player installation error.
2. The USB or HDD device has an error.
3. Do not install graphic software later than DX8.1.

Internet Explore Crash

Close IE explore, enter into the tool bar:



IE tool bar

REMOTE VIEWING: MOBILE APPS

To be able to remotely access your Orpheus DVR from your mobile smart device please download one of our **Orpheus apps** from either the **Google Play** or **iTunes** stores.



Scan the QR codes below with you mobile smart device to be directed straight to the app download source:



GOOGLE PLAY APP
DOWNLOAD



iTUNES APP
DOWNLOAD



To remotely access your Orpheus DVR via a PC or computer workstation, connected to the internet, please scan the QR code below and register to our cloud website:

www.qviscloud.co.uk





For more information about our DVRs and available cameras & accessories, please visit our website:

www.adata.co.uk

Alternatively scan this QR code with your smart phone to be directed instantly to our website:



Download our mobile apps to remotely operate your DVR on the move.